

# 1960-'61

Updated: Oct 28, 2021



## Jersey

<b>Manufacturer:</b>	Rawlings	
<b>Unique Features:</b>	Used uniforms were believed to have been obtained by GM Dean Griffing and may have originated from the 1958 Tucson Rattlers' organization and/or the defunct the 1958/1959 Copper Bowl (college all-star game)	
<b>Design/Style Notes:</b>	"DJ" DeLuxe style with double-thick inserts, double-thick elbow pad pockets, underarm gusset, split/notched tail <sup>2</sup> ; crew neck; ¾-length sleeves; horizontal seam attaches body front to shoulder cowli; nylon-cotton blend Durene fabric (see Fig. 60-3)	
<b>Tagging:</b>	<ul style="list-style-type: none"> <li>• Manufacturer's: 2 3/4" x 1 3/8" on left rear tail. Includes "Rawlings" script logo, "the finest in the field" script text and size (X" font within black shield), all in white font (see Fig. 60-4)</li> <li>• Other: 1 7/8" x 1 1/4" care tag affixed to the right of manufacturer's tag</li> </ul>	
<b>Specifications:</b>	<b>Home</b>	<b>Road</b>
<b>Fabric Color:</b>	Light Gold <sup>1</sup>	White
<b>Striping:</b>	N/A	N/A
<b>Identifiers:</b>		
<b>Front #:</b>	8 1/2" full-block style Seal Brown <sup>1</sup> tackle twill	Full-block style Seal brown <sup>1</sup> tackle twill
<b>Back #:</b>	10 1/4" full-block style Seal brown <sup>1</sup> tackle twill	Full-block style Seal brown <sup>1</sup> tackle twill
<b>Sleeve #:</b>	2 2/5" full-block style Seal brown <sup>1</sup> tackle twill	Full-block style Seal brown <sup>1</sup> tackle twill
<b>Lettering:</b>	Seal brown <sup>1</sup> tackle twill	

## Helmet



<b>Shell Color:</b>	Brown (painted)
<b>Logo:</b>	None
<b>Striping:</b>	Single 1" white center stripe
<b>Uni No:</b>	3" white sans serif font on both sides of helmet
<b>Facemask Color:</b>	Gray
<b>Notes:</b>	

### Pants

<b>Color:</b>	Seal Brown <sup>1</sup>
<b>Striping:</b>	Dual light gold along outseam, approx. ½" wide with ~ ½" spacing between.

### Socks

Knit stirrups with seal brown/light gold (home) or seal brown/white (road) alternating 1" vertical stripes (see Fig. 60-5)

<b>Misc. &amp; Notes:</b>	<ul style="list-style-type: none"> <li>• Team Colors: Seal Brown and Light Gold<sup>1</sup> (matches standard colors given in Rawlings' Athletic Equipment 1957-1958 Fall and Winter Catalog<sup>2</sup>)</li> <li>• Specifications and details provided are as per inspection of what it believed to be an unused, team-issued 1960 home jersey of offensive end Ken Carpenter (c/o T. Jacobsen).</li> </ul>
---------------------------	---

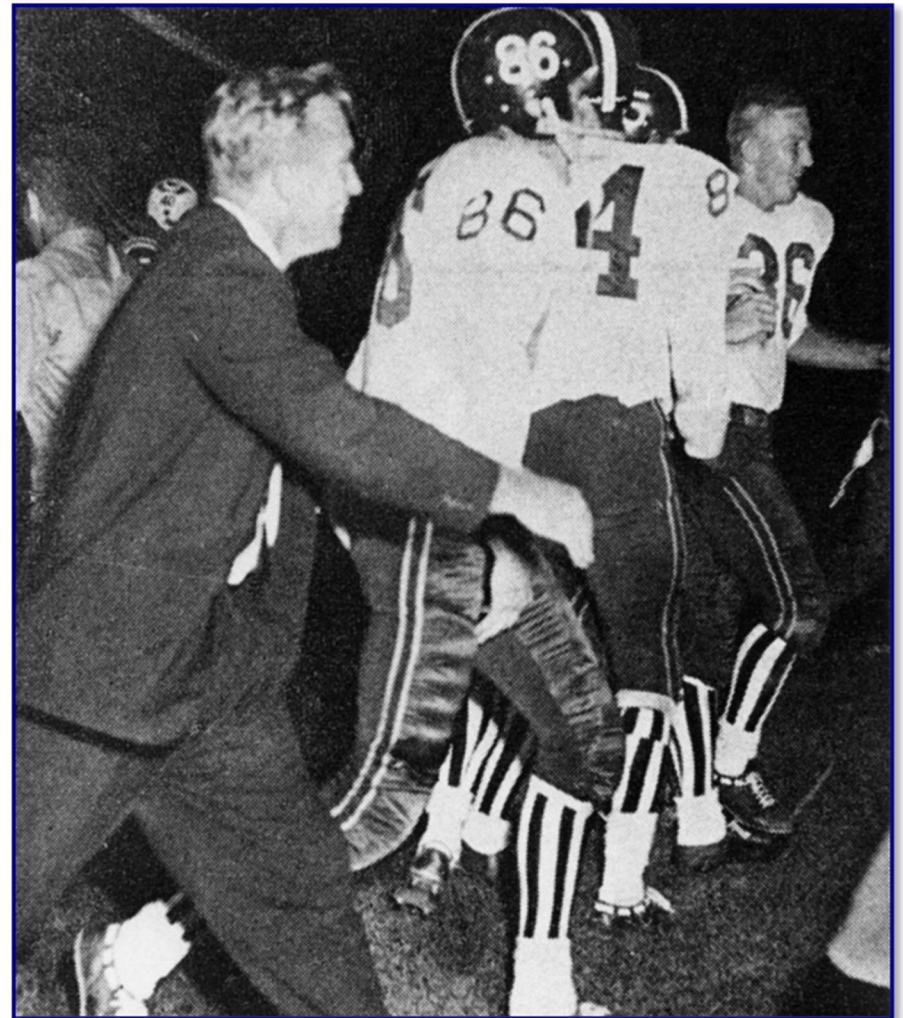
<b>Sources:</b>	<sup>1</sup> Los Angeles Chargers game program, Sept. 2, 1960, p. 23. <sup>2</sup> Rawlings Athletic Equipment 1957-1958 Fall and Winter Catalog, pp. 37-38, 63.
-----------------	---

Specifications and details provided are based upon information available to us as of the date noted through our own research as well as from what we believe are reliable sources. It is possible, however, that new information may become available that would cause us to revise this in the future.

1960-'61 (Cont'd)

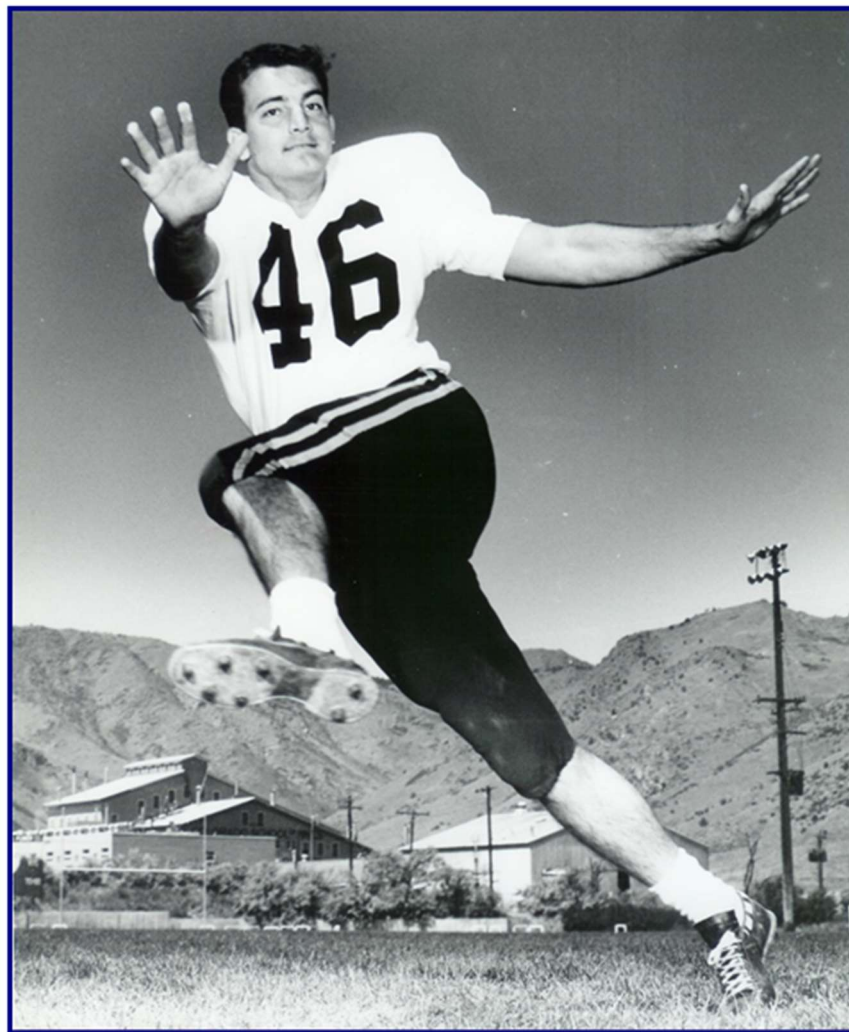
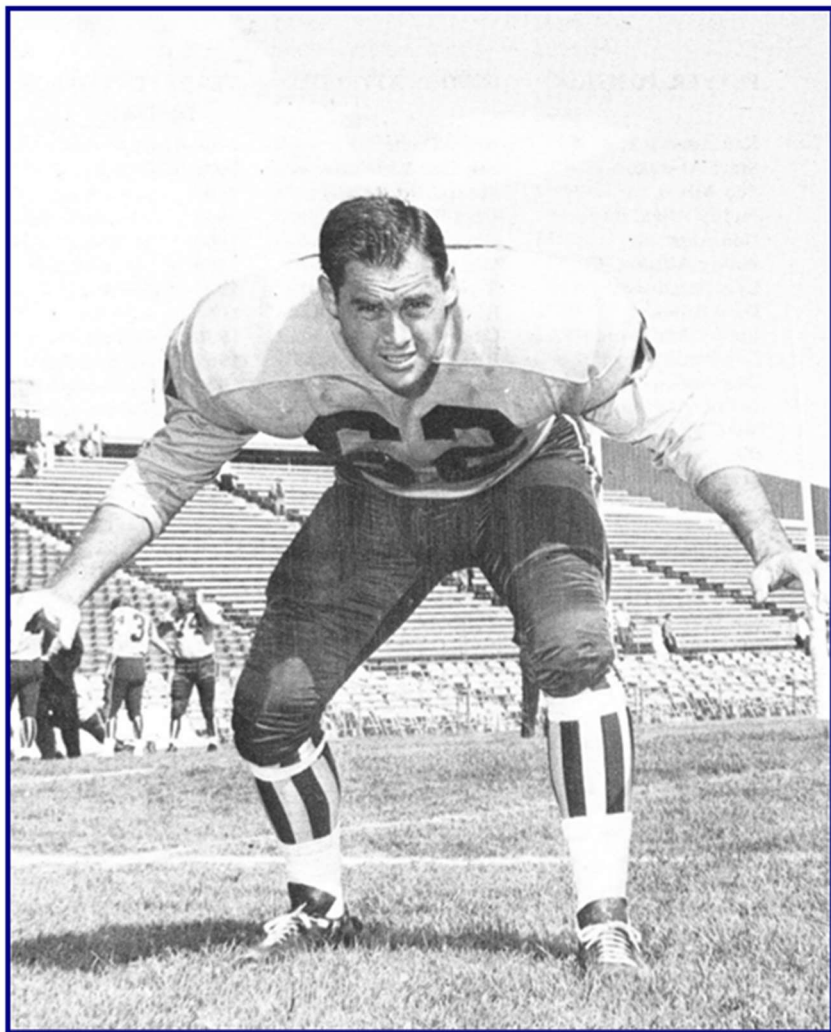


*Fig. 60-1. 1960 home uniform - QB Frank Tripucka (#18) gets off pass vs. Houston, Nov. 26*



*Fig. 60-2. 1960 road uniform (Coach Filchok leaves field with players Carothers (86), Day (84) and Brodnax (36) after defeating the Boston Patriots in first AFL game, Sep 9)*

1960-'61 (Cont'd)



*Figs. 60-3 & 60-4. Promotional photos depicting 1960-'61 era home (left, B. Alliston) and road (right, A. Gonsoulin) uniforms*

1960-'61 (Cont'd)



*Fig. 60-5. Front and rear view of 1960 home jersey of offensive end Ken Carpenter*

1960-'61



Fig. 60-6. Tagging detail from 1960 home jersey of offensive end Ken Carpenter



Fig. 60-7. Sleeve detail from 1960 home jersey of offensive end Ken Carpenter



Fig. 60-8. Circa 1960-'61 home uniform sock (c/o Patrick Scoggin)