




## Jersey

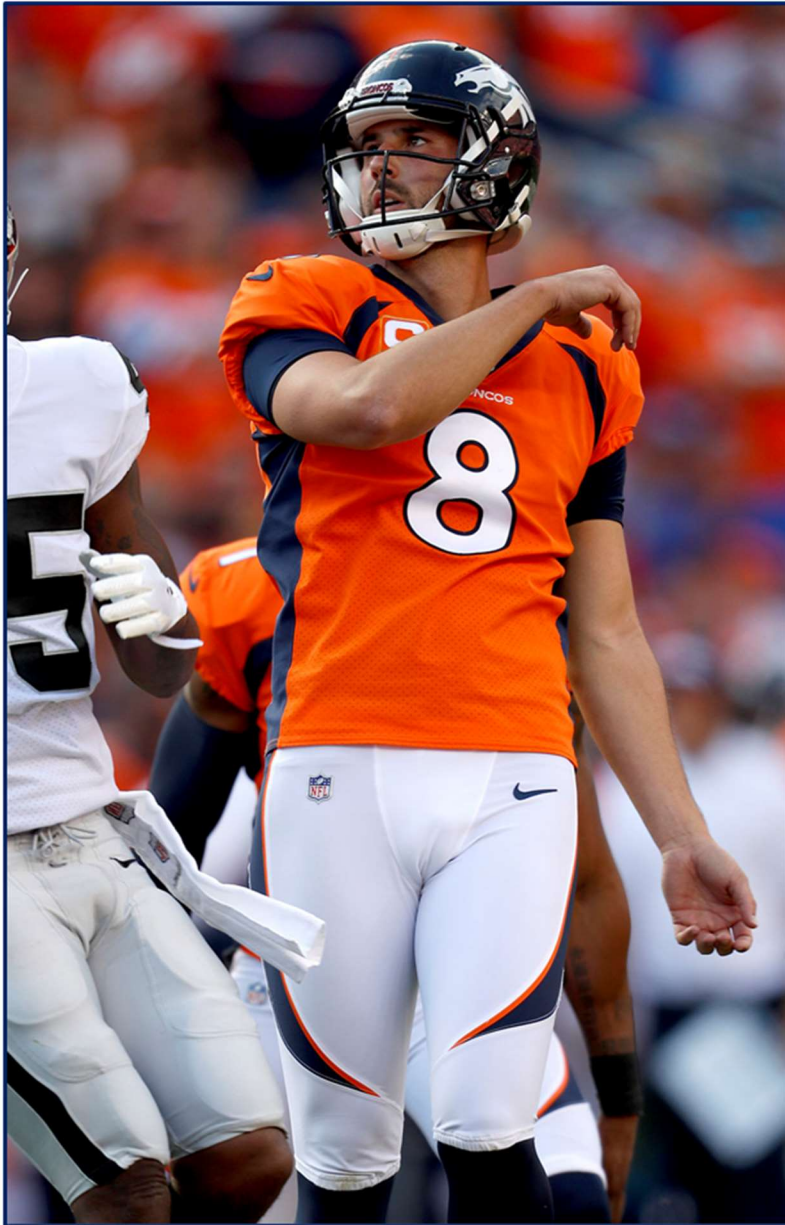
<b>Manufacturer:</b>	Nike (by Ripon Athletic?)	
<b>Unique Features:</b>	Year of issued incorporated into manufacture's collar label	
<b>Design/Style Notes:</b>	Elite 51 style - Hydrophobic 4-way stretch material with zoned mesh ventilation areas; contrasting-color flywire collar tapers to a point where the shoulder/sleeve meets the body; Hydrophobic 4-way stretch side panel inserts in contrasting color arch up and to a point forming a stripe along each side of the jersey; ¼-length sleeves; three distinct cuts available: LINE, Q-BK, SKILL	
<b>Tagging:</b>	<ul style="list-style-type: none"> <li>• Manufacturer's: "No-tag" neck label affixed to rear of collar (See: Fig. 18-8)</li> <li>• Year: Black "flag" tag sewn adjacent to manufacturer's label in collar</li> <li>• Size: Incorporated into "Manufacturer's" label</li> <li>• Other:             <ol style="list-style-type: none"> <li>1. Navy blue Nike logo patch on sleeves below numbers</li> <li>2. Rubberized NFL shield patch affixed onto the center of the collar</li> <li>3. "BRONCOS" embroidered stitch below apex of collar (white on home jersey; blue on road)</li> <li>4. "C" patch (white or gold "C" on orange field with gold border) designating team's captains affixed to right chest of jersey worn by worn by QB Case Keenum, C Matt Paradis, LB Von Miller, LB Todd Davis, K Brandon McManus and FB Andy Janovich (See: Figs. 18-1 &amp; 18-2). Patches with white "C" on multi-colored field with white border worn on Oct 7<sup>th</sup> (vs. Jets), 14<sup>th</sup> (vs. Rams) and 18<sup>th</sup> (at Phoenix) in observance of "A Crucial Catch" (cancer screening awareness, See: Fig. 18-7). Patches with white "C" on camouflage field with gold border worn Nov 4<sup>th</sup> (vs. Texans) and Nov 18<sup>th</sup> (at San Diego) in observance of the NFL's "Salute to Service" (See Fig 18-9).</li> </ol> </li> </ul>	
<b>Specifications:</b>	<b>Home</b>	<b>Road</b>
<b>Color:</b>	Orange with blue collar	White with blue collar
<b>Striping:</b>	Blue side panel insert; curves up and inward, tapering to point next to the collar	Blue side panel insert with orange trim along front/inside; curves up and inward, tapering to point next to the collar
<b>Identifiers:</b>		
<b>Front #:</b>	White 4-way stretch twill over orange revealed edge	Blue 4-way stretch twill over orange revealed edge
<b>Back #:</b>	White 4-way stretch twill over orange revealed edge	Blue 4-way stretch twill over orange revealed edge
<b>Sleeve #:</b>	White 4-way stretch twill over orange revealed edge	Blue 4-way stretch twill over orange revealed edge
<b>Lettering:</b>	White poly-twill	Blue poly-twill

*(Continued on the following page)*

## 2018 (Cont'd)

<b>Helmet</b>	
	<p><b>Shell Color:</b> Navy Blue (impregnated)</p> <p><b>Logo:</b> White “cyber” horse head with orange eye and mane</p> <p><b>Striping:</b> Triple orange, 1” wide (at rear) X 16” long center; 5/8” w. X 11” l. outers, tapering to points at front</p> <p><b>Uni No:</b> Navy blue circular decal with white unique Broncos' fonted numbering; applied to left of striping above rear bumper</p> <p><b>Facemask Color:</b> Navy blue</p> <p><b>Notes:</b> NFL Shield decal applied to left of striping above rear bumper; modified NFL shield superimposed over pink ribbon used Oct 5<sup>th</sup> and 12<sup>th</sup> (Breast cancer awareness), "BRONCOS" decal applied to rear bumper, American flag decal applied to right side above rear bumper, randomly applied military logo (Air Force, Army, Coast Guard, Marine, National Guard, Navy ) and modified NFL shield superimposed over camouflage ribbon decals applied to the immediate left and far left, respectively of uni no. decal on Nov 11<sup>th</sup> (at Oakland), Nov 16<sup>th</sup> (at St. Louis) and Nov 23<sup>rd</sup> (vs Dolphins) in observance of the NFL's “Salute to Service” (military appreciation).</p>
<p style="text-align: center;"><b>Pants</b></p> <p><b>Color:</b> Home/Road: White</p> <p><b>Striping:</b> Home/Road: Blue with orange trim along front/inside Striping width matches width of jersey at the top; tapering to a point which curves inward to just above the knee</p> <p><b>Other</b> Manufacturer: Nike (by Ripon?) NFL Shield patch sewn on to left front below belt line; Navy blue Nike logo sewn on to right front below belt line.</p>	<p style="text-align: center;"><b>Socks</b></p> <p>Solid navy blue upper field with orange stripe separating white lower field</p>
<p><b>Misc. &amp; Notes:</b></p> <ul style="list-style-type: none"> <li>• Team Colors: Broncos Orange (Pantone© 1655C), Broncos Navy (Pantone© 289C), and White</li> <li>• Alternate home navy blue jerseys with navy pants worn on Oct 1<sup>st</sup> (vs. Chiefs); with white pants worn on Dec 15<sup>th</sup> (vs. Browns)</li> <li>• “Color Rush” orange (home) jerseys/pants worn Nov 25<sup>th</sup> vs Steelers</li> </ul>	
<p><b>Sources:</b></p> <p>Specifications and details provided are based upon information available to us as of the date noted, through our own research as well as from what we believe are reliable sources. It is possible, however, that new information may become available that would cause us to revise this in the future.</p>	

2018 (Cont'd)



*Figs. 18-1 & 18-2. 2018 home (left, B. McManus, Sep 16) and road (right, C. Keenum, Dec 9) uniforms with captain's "C" patches*

2018 (Cont'd)



*Figs. 18-3 & 18-4. Front and rear view of 2018 "skill"-cut home jersey (C. Sutton, Oct 14)*

2018 (Cont'd)



*Figs. 18-5 & 18-6. Front and rear views of 2018 road jersey (B. Marshall, Sep 23)*

## 2018 (Cont'd)



Fig. 18-7. Jersey collar detail from 2018 “Line”-cut road jersey (V. Miller, Oct 7)  
Note captain’s “C” patch on multi-colored field in recognition of the “Crucial Catch” campaign (cancer screening awareness)



Fig. 18-8. Manufacturer’s tagging detail from the collar of a 2018 road jersey



Fig. 18-9. Road jersey collar detail (B. McManus, Nov 18, c/o K. Joseph)  
Note captain’s “C” patch on camouflaged field celebrating “Salute To Service” (military appreciation)

## 2018 Home Alternate

### Jersey

<b>Manufacturer:</b>	Nike (by Ripon Athletic?)	
<b>Unique Features:</b>	Year of issued incorporated into manufacture's collar label	
<b>Design/Style Notes:</b>	Elite 51 style - Hydrophobic 4-way stretch material with zoned mesh ventilation areas; contrasting-color flywire collar tapers to a point where the shoulder/sleeve meets the body; Hydrophobic 4-way stretch side panel inserts in contrasting color arch up and to a point forming a stripe along each side of the jersey; ¼-length sleeves; three distinct cuts available: LINE, Q-BK, SKILL. (L-BK?)	
<b>Tagging:</b>	<ul style="list-style-type: none"> <li>• Manufacturer's: "No-tag" neck label affixed to rear of collar.</li> <li>• Year: Black "flag" tag sewn adjacent to manufacturer's label in collar</li> <li>• Size: Incorporated into "Manufacturer's" label</li> <li>• Other:               <ol style="list-style-type: none"> <li>1. Blue Nike logo patches on sleeves below numbers</li> <li>2. NFL shield logo applied onto collar centered below neck opening</li> <li>3. "C" patch (white "C" on orange-colored field; with white border) affixed to right chest of jersey, designating team's captains; worn by QB Case Keenum, C Matt Paradis, LB Von Miller, LB Todd Davis, K Brandon McManus and FB Andy Janovich</li> </ol> </li> </ul>	
<b>Specifications:</b>	<b>Home</b>	<b>Road</b>
<b>Color:</b>	Blue with orange collar	N/A
<b>Striping:</b>	Orange Spandex side panel insert; curves up and inward, tapering to point next to the collar	
<b>Identifiers:</b>		
<b>Front #:</b>	White 4-way stretch twill over orange revealed edge	
<b>Back #:</b>	White 4-way stretch twill over orange revealed edge	
<b>Sleeve #:</b>	White 4-way stretch twill over orange revealed edge	
<b>Lettering:</b>	White poly-twill	

### Pants

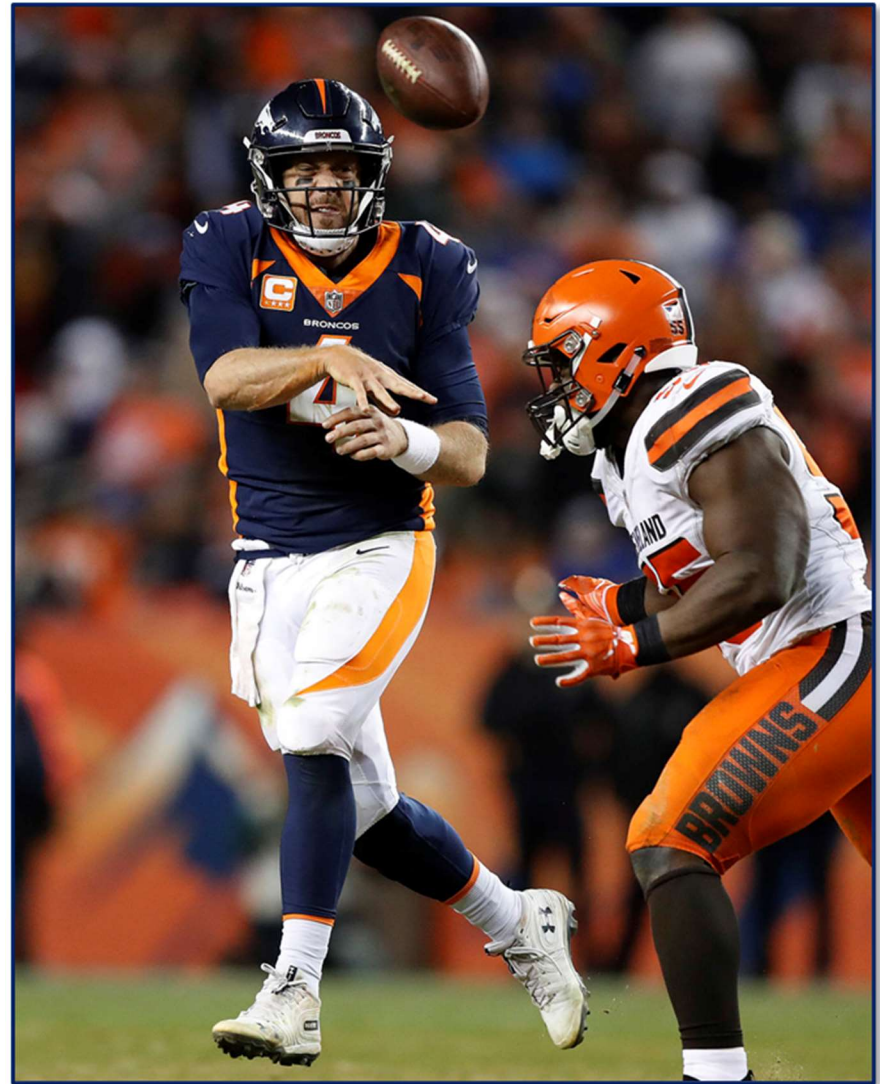
	Oct 1	Dec 15
<b>Color:</b>	Navy blue	White
<b>Striping:</b>	Orange; Striping width matches width of jersey at the top; tapering to a point which curves inward to just above the knee	Orange; Striping width matches width of jersey at the top; tapering to a point which curves inward to just above the knee
<b>Other</b>	NFL Shield patch sewn on to right front below belt line; white Nike logo sewn on to left front below belt line.	NFL Shield patch sewn on to right front below belt line; navy blue Nike logo sewn on to left front below belt line.

**Misc. & Notes:** Alternate home navy blue jerseys with navy pants worn on Oct 1st (vs. Chiefs); with white pants worn on Dec 15<sup>th</sup> (vs. Browns)

**Sources:**

Specifications and details provided are based upon information available to us as of the date noted, through our own research as well as from what we believe are reliable sources. It is possible, however, that new information may become available that would cause us to revise this in the future.

## 2018 Home Alternate (Cont'd)



*Figs. 18-10 & 18-11. 2017 home alternate uniform with navy blue pants (left, Oct 1) and with white pants (right, Dec 15)*



## 2018 Alternate/Color Rush

### Jersey

<b>Manufacturer:</b>	Nike (by Ripon Athletic?)		
<b>Unique Features:</b>	Year of issued incorporated into manufacture's collar label		
<b>Design/Style Notes:</b>	Elite 51 style - Hydrophobic 4-way stretch material with zoned mesh ventilation areas; contrasting-color flywire collar tapers to a point where the shoulder/sleeve meets the body; Hydrophobic 4-way stretch side panel inserts in contrasting color arch up and to a point forming a stripe along each side of the jersey; ¼-length sleeves; three distinct cuts available: LINE, Q-BK, SKILL. (L-BK?)		
<b>Tagging:</b>	<ul style="list-style-type: none"> <li>• Manufacturer's: "No-tag" neck label affixed to rear of collar.</li> <li>• Year: Black "flag" tag sewn adjacent to manufacturer's label in collar</li> <li>• Size: Incorporated into "Manufacturer's" label</li> <li>• Other:               <ol style="list-style-type: none"> <li>1. Blue Nike logo patches on sleeves below numbers</li> <li>2. NFL shield logo applied onto collar centered below neck opening</li> <li>3. "C" patch (white) on orange field with orange border designating team's captains affixed to right chest of jersey; worn by QB Case Keenum, C Matt Paradis, LB Von Miller, LB Todd Davis, K Brandon McManus and FB Andy Janovich.</li> </ol> </li> </ul>		
<b>Specifications:</b>	<b>Home</b>		<b>Road</b>
<b>Color:</b>	Orange		N/A
<b>Striping:</b>	Blue-White-Blue sleeve striping		
<b>Identifiers:</b>			
<b>Front #:</b>	White over blue revealed edge		
<b>Back #:</b>	White over blue revealed edge		
<b>Sleeve #:</b>	White over blue revealed edge		
<b>Lettering:</b>	White over blue revealed edge		

### Helmet



<b>Shell Color:</b>	Navy Blue (impregnated)
<b>Logo:</b>	Snorting white bronco rearing from inside orange "D"
<b>Striping:</b>	White / Orange / White
<b>Uni No:</b>	White numbering; applied to side of striping above rear bumper
<b>Facemask Color:</b>	Navy blue
<b>Notes:</b>	American flag decal applied to left side of rear above number

### Pants

<b>Color:</b>	Orange
<b>Striping:</b>	Blue/White/Blue striping along the outseam of each leg
<b>Other</b>	NFL Shield patch sewn on to right front below belt line; Blue Nike logo sewn on to left front below belt line.

**Misc. & Notes:** The "Color Rush" uniforms worn for home game vs. Steelers on November 25<sup>th</sup>

**Sources:**

Specifications and details provided are based upon information available to us as of the date noted, through our own research as well as from what we believe are reliable sources. It is possible, however, that new information may become available that would cause us to revise this in the future.

**2018 Home Alternate/Color Rush (Cont'd)**



*Figs. 18-12. 2018 home alternate/“Color Rush” uniforms (C. Keenum, Nov. 25)*