




## Jersey

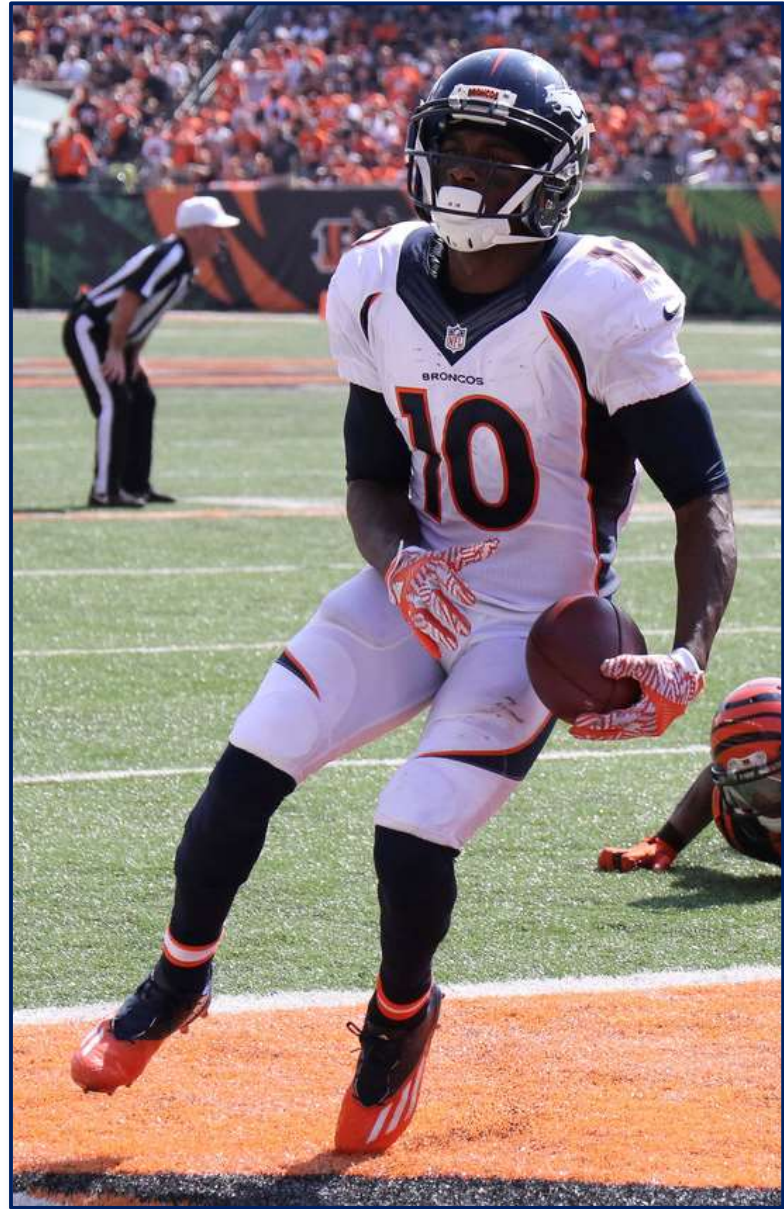
<b>Manufacturer:</b>	Nike (by Ripon Athletic?)	
<b>Unique Features:</b>	Year of issue incorporated into manufacture's collar label	
<b>Design/Style Notes:</b>	Elite 51 style - Hydrophobic 4-way stretch material with zoned mesh ventilation areas; contrasting-color flywire collar tapers to a point where the shoulder/sleeve meets the body; Hydrophobic 4-way stretch side panel inserts in contrasting color arch up and to a point forming a stripe along each side of the jersey; ¼-length sleeves; three distinct cuts available: LINE, Q-BK, SKILL	
<b>Tagging:</b>	<ul style="list-style-type: none"> <li>• Manufacturer's: "No-tag" neck label affixed to rear of collar (See: Fig. 16-5)</li> <li>• Year: Black "flag" tag sewn adjacent to manufacturer's label in collar</li> <li>• Size: Incorporated into "Manufacturer's" label; added/subtracted length, when applicable, noted on "flag" tag sewn adjacent to manufacturer's label, opposite of year tag.</li> <li>• Other:             <ol style="list-style-type: none"> <li>1. Navy blue Nike logo patch on sleeves below numbers</li> <li>2. Rubberized NFL shield patch affixed onto the center of the collar</li> <li>3. "BRONCOS" embroidered stitch below apex of collar (white on home jersey; blue on road)</li> <li>4. "C" patch (white or gold "C" on orange field with gold border) designating team's captains affixed to right chest of jersey worn by WR Demaryius Thomas (2), DE DeMarcus Ware (3) and CB Kayvon Webster (1) (See: Fig. 16-1). Patches with white "C" on pink field with white border worn during the month of October in observance of breast cancer awareness month (see Fig. 16-9). Patches with white "C" on camouflage field with gold border worn Nov. 13<sup>th</sup> (at New Orleans and possibly during other games during November) in recognition of "Salute to Service" (military appreciation).</li> </ol> </li> </ul>	
<b>Specifications:</b>	<b>Home</b>	<b>Road</b>
<b>Color:</b>	Orange with blue collar	White with blue collar
<b>Striping:</b>	Blue side panel insert; curves up and inward, tapering to point next to the collar	Blue side panel insert with orange trim along front/inside; curves up and inward, tapering to point next to the collar
<b>Identifiers:</b>		
<b>Front #:</b>	White 4-way stretch twill over orange revealed edge	Blue 4-way stretch twill over orange revealed edge
<b>Back #:</b>	White 4-way stretch twill over orange revealed edge	Blue 4-way stretch twill over orange revealed edge
<b>Sleeve #:</b>	White 4-way stretch twill over orange revealed edge	Blue 4-way stretch twill over orange revealed edge
<b>Lettering:</b>	White poly-twill	Blue poly-twill

*(Continued on the following page)*

## 2016 (Cont'd)

<b>Helmet</b>	
	<p><b>Shell Color:</b> Navy Blue (impregnated)</p> <p><b>Logo:</b> White “cyber” horse head with orange eye and mane</p> <p><b>Striping:</b> Triple orange, 1” wide (at rear) X 16” long center; 5/8” w. X 11” l. outers, tapering to points at front</p> <p><b>Uni No:</b> Navy blue circular decal with white unique Broncos' fonted numbering; applied to left of striping above rear bumper</p> <p><b>Facemask Color:</b> Navy blue</p> <p><b>Notes:</b> NFL Shield decal applied to left of striping above rear bumper; "BRONCOS" decal applied to rear bumper; American flag decal applied to right side above rear bumper; randomly applied military logo (Air Force, Army, Coast Guard, Marine, National Guard, Navy ) and modified NFL shield superimposed over camouflage ribbon decals applied to the immediate left and far left, respectively of uni no. decal on Nov 6<sup>th</sup> (at Oakland), Nov 13<sup>th</sup> (at New Orleans) and Nov 27<sup>th</sup> (vs Chiefs) in observance of the NFL’s “Salute to Service” (military appreciation).</p>
<p style="text-align: center;"><b>Pants</b></p> <p><b>Color:</b> Home/Road: White</p> <p><b>Striping:</b> Home/Road: Blue with orange trim along front/inside Striping width matches width of jersey at the top; tapering to a point which curves inward to just above the knee</p> <p><b>Other</b> Manufacturer: Nike (by Ripon?) NFL Shield patch sewn on to left front below belt line; Navy blue Nike logo sewn on to right front below belt line.</p>	<p style="text-align: center;"><b>Socks</b></p> <p>Solid navy blue upper field with orange stripe separating white lower field</p>
<b>Misc. &amp; Notes:</b>	<ul style="list-style-type: none"> <li>• Team Colors: Broncos Orange (Pantone© 1655C), Broncos Navy (Pantone© 289C) <sup>1</sup>, and White</li> <li>• “Color Rush” (orange) uniforms worn on Oct 13<sup>th</sup> at San Diego; alternate home navy blue jerseys/pants worn on Oct 24<sup>th</sup> vs. Texans; helmets featured the circa 1968-'96 snorting bronco in “D” logo on the current (navy blue) colored shell</li> </ul>
<b>Sources:</b>	
<p>Specifications and details provided are based upon information available to us as of the date noted, through our own research as well as from what we believe are reliable sources. It is possible, however, that new information may become available that would cause us to revise this in the future.</p>	

2016 (Cont'd)



*Figs. 16-1 & 16-2. 2016 home (Sep 18) and road (Sep 25) uniforms*



2016 (Cont'd)



Figs. 16-3 & 16-4. Front and rear views (above) of 2016 home jersey (C.J. Anderson, worn Oct 2)



Fig. 16-5. Manufacturer's collar tagging detail (left) from 2016 home jersey

2016 (Cont'd)



*Figs. 16-6 & 16-7. Front and rear views of 2016 road jersey (D. Wolfe, Sep 25)*

## 2016 Home Alternate

### Jersey

<b>Manufacturer:</b>	Nike (by Ripon Athletic?)	
<b>Unique Features:</b>	Year of issued incorporated into manufacture's collar label	
<b>Design/Style Notes:</b>	Elite 51 style - Hydrophobic 4-way stretch material with zoned mesh ventilation areas; contrasting-color flywire collar tapers to a point where the shoulder/sleeve meets the body; Hydrophobic 4-way stretch side panel inserts in contrasting color arch up and to a point forming a stripe along each side of the jersey; ¼-length sleeves; three distinct cuts available: LINE, Q-BK, SKILL. (L-BK?)	
<b>Tagging:</b>	<ul style="list-style-type: none"><li>• Manufacturer's: "No-tag" neck label affixed to rear of collar.</li><li>• Year: Black "flag" tag sewn adjacent to manufacturer's label in collar; added/subtracted length, when applicable, noted on "flag" tag sewn adjacent to manufacturer's label, opposite of year tag.</li><li>• Size: Incorporated into "Manufacturer's" label</li><li>• Other:<ol style="list-style-type: none"><li>1. White Nike logo patches on sleeves below numbers</li><li>2. NFL shield logo applied onto collar centered below neck opening</li><li>3. BRONCOS" white embroidered stitching below apex of collar</li><li>4. "C" patch (white "C") on pink field with white border designating team's captains affixed to right chest of jersey; worn by WR Demaryius Thomas (2), DE DeMarcus Ware (3) and CB Kayvon Webster (1) (See: Fig. 16-9)</li></ol></li></ul>	
<b>Specifications:</b>	<b>Home</b>	<b>Road</b>
<b>Color:</b>	Blue with orange collar	N/A
<b>Striping:</b>	Orange Spandex side panel insert; curves up and inward, tapering to point next to the collar	
<b>Identifiers:</b>		
<b>Front #:</b>	White 4-way stretch twill over orange revealed edge	
<b>Back #:</b>	White 4-way stretch twill over orange revealed edge	
<b>Sleeve #:</b>	White 4-way stretch twill over orange revealed edge	
<b>Lettering:</b>	White poly-twill	

### Pants

<b>Color:</b>	White
<b>Striping:</b>	Orange; Striping width matches width of jersey at the top; tapering to a point which curves inward to just above the knee
<b>Other</b>	NFL Shield patch sewn on to right front below belt line; White Nike logo sewn on to left front below belt line.

**Misc. & Notes:** "Alternate" blue jerseys with white pants worn for home game vs. the Houston Texans on October 24<sup>th</sup>

#### Sources:

Specifications and details provided are based upon information available to us as of the date noted, through our own research as well as from what we believe are reliable sources. It is possible, however, that new information may become available that would cause us to revise this in the future.



**2016 Home Alternate (Cont'd)**



*Fig. 16-8. 2016 home alternate uniform (K. Webster, Oct 24)*

## 2016 Home Alternate (Cont'd)



*Figs. 16-9 & 16-10. Front and rear views of 2016 home alternate jersey (D. Thomas, Oct 24)  
Note captain's "C" patch on pink field (in observance of breast cancer awareness month)*



## 2016 Road Alternate/Color Rush

### Jersey

<b>Manufacturer:</b>	Nike (by Ripon Athletic?)		
<b>Unique Features:</b>	Year of issued incorporated into manufacture's collar label		
<b>Design/Style Notes:</b>	Elite 51 style - Hydrophobic 4-way stretch material with zoned mesh ventilation areas; contrasting-color flywire collar tapers to a point where the shoulder/sleeve meets the body; Hydrophobic 4-way stretch side panel inserts in contrasting color arch up and to a point forming a stripe along each side of the jersey; ¼-length sleeves; three distinct cuts available: LINE, Q-BK, SKILL. (L-BK?)		
<b>Tagging:</b>	<ul style="list-style-type: none"> <li>• Manufacturer's: "No-tag" neck label affixed to rear of collar.</li> <li>• Year: Black "flag" tag sewn adjacent to manufacturer's label in collar</li> <li>• Size: Incorporated into "Manufacturer's" label</li> <li>• Other:               <ol style="list-style-type: none"> <li>1. Blue Nike logo patches on sleeves below numbers</li> <li>2. NFL shield logo applied onto collar centered below neck opening</li> <li>3. "C" patch (white) on orange field with orange border designating team's captains affixed to right chest of jersey; worn by WR Demaryius Thomas (2), DE DeMarcus Ware (3) and CB Kayvon Webster (1)</li> </ol> </li> </ul>		
<b>Specifications:</b>	<b>Home</b>		<b>Road</b>
<b>Color:</b>	N/A		Orange
<b>Striping:</b>			Blue-White-Blue sleeve striping
<b>Identifiers:</b>			
<b>Front #:</b>			White over blue revealed edge
<b>Back #:</b>			White over blue revealed edge
<b>Sleeve #:</b>			White over blue revealed edge
<b>Lettering:</b>			White over blue revealed edge

### Helmet



<b>Shell Color:</b>	Navy Blue (impregnated)
<b>Logo:</b>	Snorting white bronco rearing from inside orange "D"
<b>Striping:</b>	White / Orange / White
<b>Uni No:</b>	White numbering; applied to side of striping above rear bumper
<b>Facemask Color:</b>	Navy blue
<b>Notes:</b>	American flag decal applied to left side of rear above number

### Pants

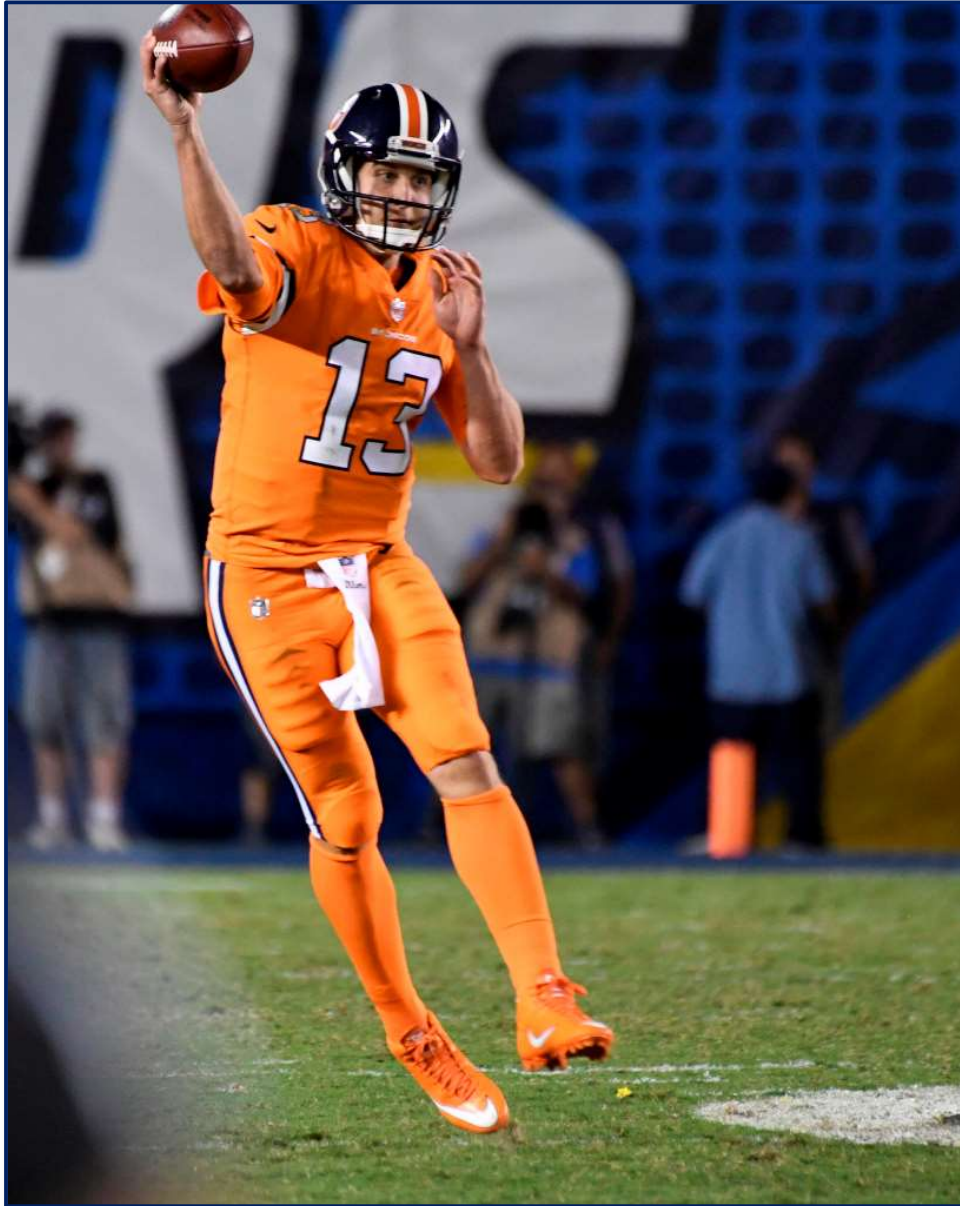
<b>Color:</b>	Orange
<b>Striping:</b>	Blue/White/Blue striping along the outseam of each leg
<b>Other</b>	NFL Shield patch sewn on to right front below belt line; Blue Nike logo sewn on to left front below belt line.

**Misc. & Notes:** The road alternate "Color Rush" uniforms worn for road game at San Diego on October 13<sup>th</sup>; in contrast, the Chargers wore all blue uniforms

**Sources:**

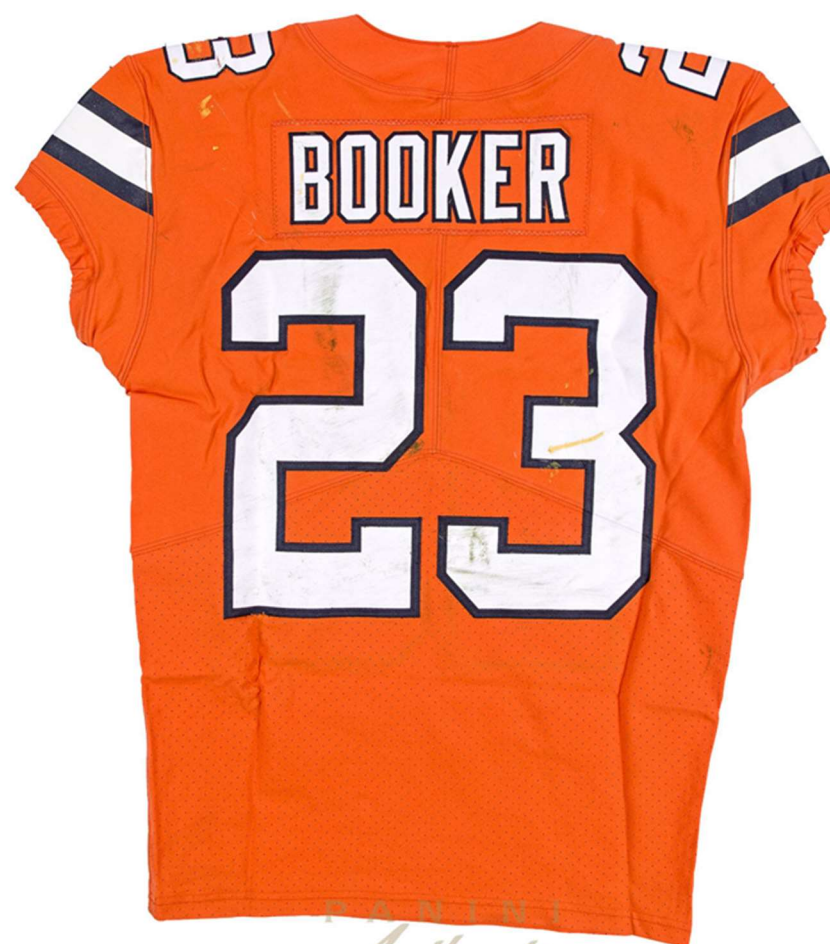
Specifications and details provided are based upon information available to us as of the date noted, through our own research as well as from what we believe are reliable sources. It is possible, however, that new information may become available that would cause us to revise this in the future.

**2016 Road Alternate/Color Rush (Cont'd)**



*Figs. 16-11. 2016 road alternate/"Color Rush" uniforms worn Oct. 13<sup>th</sup> at San Diego (T. Siemian)*

2016 Road Alternate/Color Rush (Cont'd)



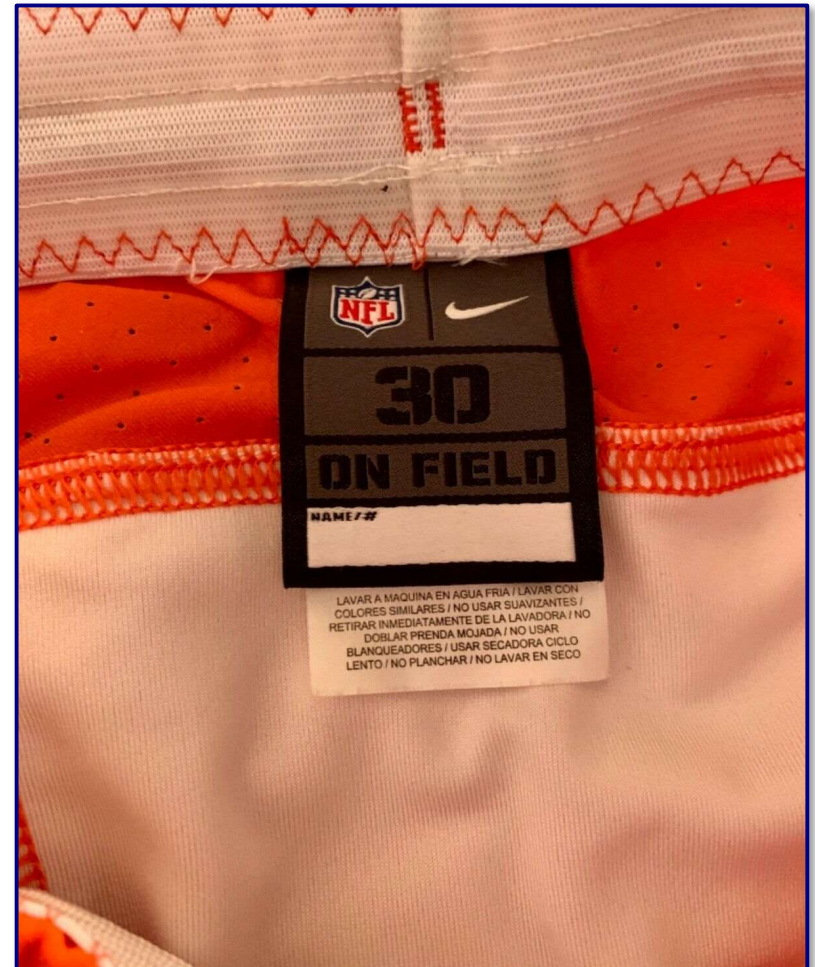
Figs. 16-12 & 16-13. Front and rear views of 2016 road alternate/"Color Rush" jersey (D. Booker, Oct 13<sup>th</sup>)



## 2016 Road Alternate/Color Rush (Cont'd)



*Figs. 16-14. Billy Winn's "Color Rush" game pants (B. Winn, Oct 13)*



*Figs. 16-15. Manufacturer's tagging from "Color Rush" game pants*