



## Jersey

**Manufacturer:** Nike (by Ripon Athletic?)  
**Unique Features:** Year of issued incorporated into manufacture’s collar label  
**Design/Style Notes:** Elite 51 style - Hydrophobic 4-way stretch material with zoned mesh ventilation areas; contrasting-color flywire collar tapers to a point where the shoulder/sleeve meets the body; Hydrophobic 4-way stretch side panel inserts in contrasting color arch up and to a point forming a stripe along each side of the jersey; ¼-length sleeves; three distinct cuts available: LINE, Q-BK, SKILL.


- Tagging:**
- Manufacturer’s: “No-tag” neck label affixed to rear of collar.
  - Year: Black “flag” tag sewn adjacent to manufacturer’s label in collar
  - Size: Incorporated into “Manufacturer’s” label; added/subtracted length, when applicable, noted on “flag” tag sewn adjacent to manufacturer’s label, opposite of year tag.
  - Other:
    1. Navy blue Nike logo patch on sleeves below numbers
    2. Rubberized NFL shield patch affixed onto the center of the collar
    3. “BRONCOS” embroidered stitch below apex of collar (white on home jersey; blue on road)
    4. “C” patch (white or gold “C” on orange field with gold border) designating team’s captains affixed to right chest of jersey (see Fig. 13-2); worn by CB Champ Bailey (6), S David Bruton, OT Ryan Clady\*, QB Peyton Manning (2), WR Wes Welker, and LB Wesley Woodyard (5) (See: Fig. 13-8). Patches with white “C” on pink field with white border worn October 6<sup>th</sup>, 13<sup>th</sup> and 20<sup>th</sup> in observance of breast cancer awareness month (see Fig. 13-9). Patches with white or orange “C” on camouflage field with gold border worn Nov 10<sup>th</sup> (at San Diego), Nov 17<sup>th</sup> (vs. Chiefs) and Nov 24<sup>th</sup> (at New England) in observance of the NFL’s “Salute to Service” (military appreciation).

\* Through September 18, when place on injured reserve  
 \*\* After September 18, replacing Ryan Clady

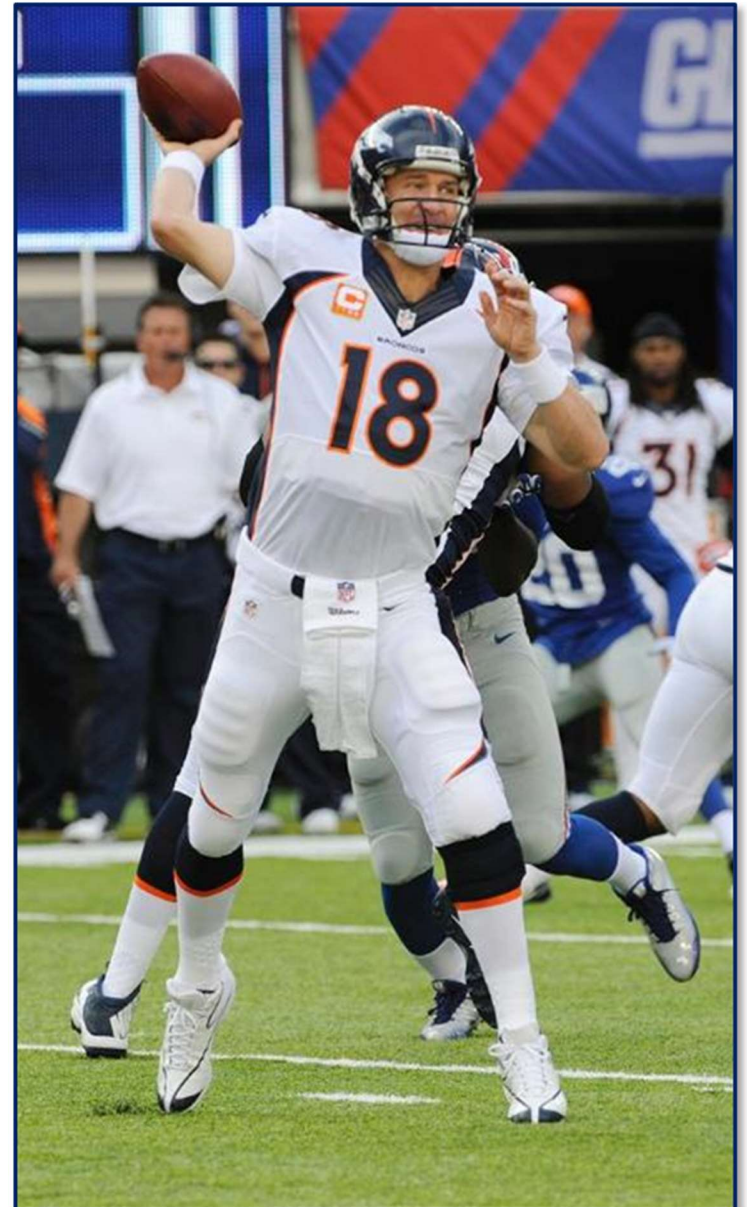
<b>Specifications:</b>	<b>Home</b>	<b>Road</b>
<b>Color:</b>	Orange with blue collar	White with blue collar
<b>Striping:</b>	Blue side panel insert; curves up and inward, tapering to point next to the collar	Blue side panel insert with orange trim along front/inside; curves up and inward, tapering to point next to the collar
<b>Identifiers:</b>		
<b>Front #:</b>	White 4-way stretch twill over orange revealed edge	Blue 4-way stretch twill over orange revealed edge
<b>Back #:</b>	White 4-way stretch twill over orange revealed edge	Blue 4-way stretch twill over orange revealed edge
<b>Sleeve #:</b>	White 4-way stretch twill over orange revealed edge	Blue 4-way stretch twill over orange revealed edge
<b>Lettering:</b>	White poly-twill	Blue poly-twill

*(Continued on the following page)*

## 2013 (Cont'd)

<b>Helmet</b>	
	<p><b>Shell Color:</b> Navy Blue (impregnated)</p> <p><b>Logo:</b> White “cyber” horse head with orange eye and mane</p> <p><b>Striping:</b> Triple orange, 1” wide (at rear) X 16” long center; 5/8” w. X 11” l. outers, tapering to points at front</p> <p><b>Uni No:</b> Navy blue circular decal with white unique Broncos' fonted numbering; applied to left of striping above rear bumper</p> <p><b>Facemask Color:</b> Navy blue</p> <p><b>Notes:</b> NFL Shield decal applied to left of striping above rear bumper, "BRONCOS" decal applied to rear bumper, American flag decal applied to right side above rear bumper, Colorado Memorial decal applied to the left above uni no decal; Pink ribbon decal (Breast cancer awareness) applied to the far left of uni no decal during October; randomly applied military logo (Air Force, Army, Coast Guard, Marine, National Guard, Navy ) and camouflage ribbon decals applied to the immediate left and far left, respectively of uni no. decal on Nov 10<sup>th</sup> (at San Diego), Nov 17<sup>th</sup> (vs. Chiefs) and Nov 25<sup>th</sup> (at New England) in observance of the NFL's “Salute to Service” (military appreciation).</p>
<p style="text-align: center;"><b>Pants</b></p> <p><b>Color:</b> Home/Road: White</p> <p><b>Striping:</b> Home/Road: Blue with orange trim along front/inside Striping width matches width of jersey at the top; tapering to a point which curves inward to just above the knee</p> <p><b>Other</b> Manufacturer: Nike (by Ripon?) NFL Shield patch sewn on to left front below belt line; Navy blue Nike logo sewn on to right front below belt line.</p>	<p style="text-align: center;"><b>Socks</b></p> <p>Solid navy blue upper field with orange stripe separating white lower field</p>
<b>Misc. &amp; Notes:</b>	<ul style="list-style-type: none"> <li>• Team Colors: Broncos Orange (Pantone© 1655C), Broncos Navy (Pantone© 289C) <sup>1</sup>, and White</li> <li>• Alternate home navy blue jerseys/pants worn on Nov 18 vs. Chargers.</li> </ul>
<b>Sources:</b>	<sup>1</sup> 2013 Denver Broncos Media Guide, p. 4
<p>Specifications and details provided are based upon information available to us as of the date noted, through our own research as well as from what we believe are reliable sources. It is possible, however, that new information may become available that would cause us to revise this in the future.</p>	

2013 (Cont'd)



*Figs. 13-1 & 13-2. 2013 home (Sep 5) and road (Sep 15) uniforms*



2013 (Cont'd)



*Figs. 13-3 & 13-4. Front and rear views of Wes Welker 2013 Skill-cut home jersey, worn Sep 5<sup>th</sup>*

2013 (Cont'd)



*Fig. 13-5. Collar tagging detail from 2013 home jersey (E. Decker)*



2013 (Cont'd)



*Figs. 13-6 & 13-7. Front and rear views of 2013 Ronnie Hillman "skill" cut road jersey, worn Sep 15th*



Fig. 13-8. Collar tagging detail from 2013 road jersey (P. Manning)



Fig. 13-9. Wes Welker with captain's "C" patch affixed to home jersey (Sep 29)

## 2013 Home Alternate

### Jersey

<b>Manufacturer:</b>	Nike (by Ripon Athletic?)	
<b>Unique Features:</b>	Year of issued incorporated into manufacture's collar label	
<b>Design/Style Notes:</b>	Elite 51 style - Hydrophobic 4-way stretch material with zoned mesh ventilation areas; contrasting-color flywire collar tapers to a point where the shoulder/sleeve meets the body; Hydrophobic 4-way stretch side panel inserts in contrasting color arch up and to a point forming a stripe along each side of the jersey; ¼-length sleeves; three distinct cuts available: LINE, Q-BK, SKILL. (L-BK?)	
<b>Tagging:</b>	<ul style="list-style-type: none"><li>• Manufacturer's: "No-tag" neck label affixed to rear of collar.</li><li>• Year: Black "flag" tag sewn adjacent to manufacturer's label in collar</li><li>• Size: Incorporated into "Manufacturer's" label</li><li>• Other:<ol style="list-style-type: none"><li>1. White Nike logo patches on sleeves below numbers</li><li>2. NFL shield logo applied onto collar centered below neck opening</li><li>3. BRONCOS" white embroidered stitching below apex of collar</li><li>4. "C" patch (white or orange "C") on pink field with white border designating team's captains affixed to right chest of jersey; worn by CB Champ Bailey (6), S David Bruton, QB Peyton Manning (2), WR Wes Welker, and LB Wesley Woodyard (5) on October 6<sup>th</sup> in observance of breast cancer awareness month (See: Fig. 13-10).</li></ol></li></ul>	
<b>Specifications:</b>	<b>Home</b>	<b>Road</b>
<b>Color:</b>	Blue with orange collar	N/A
<b>Striping:</b>	Orange Spandex side panel insert; curves up and inward, tapering to point next to the collar	
<b>Identifiers:</b>		
<b>Front #:</b>	White 4-way stretch twill over orange revealed edge	
<b>Back #:</b>	White 4-way stretch twill over orange revealed edge	
<b>Sleeve #:</b>	White 4-way stretch twill over orange revealed edge	
<b>Lettering:</b>	White poly-twill	

### Pants

<b>Color:</b>	Blue
<b>Striping:</b>	Orange; Striping width matches width of jersey at the top; tapering to a point which curves inward to just above the knee
<b>Other</b>	NFL Shield patch sewn on to right front below belt line; White Nike logo sewn on to left front below belt line.

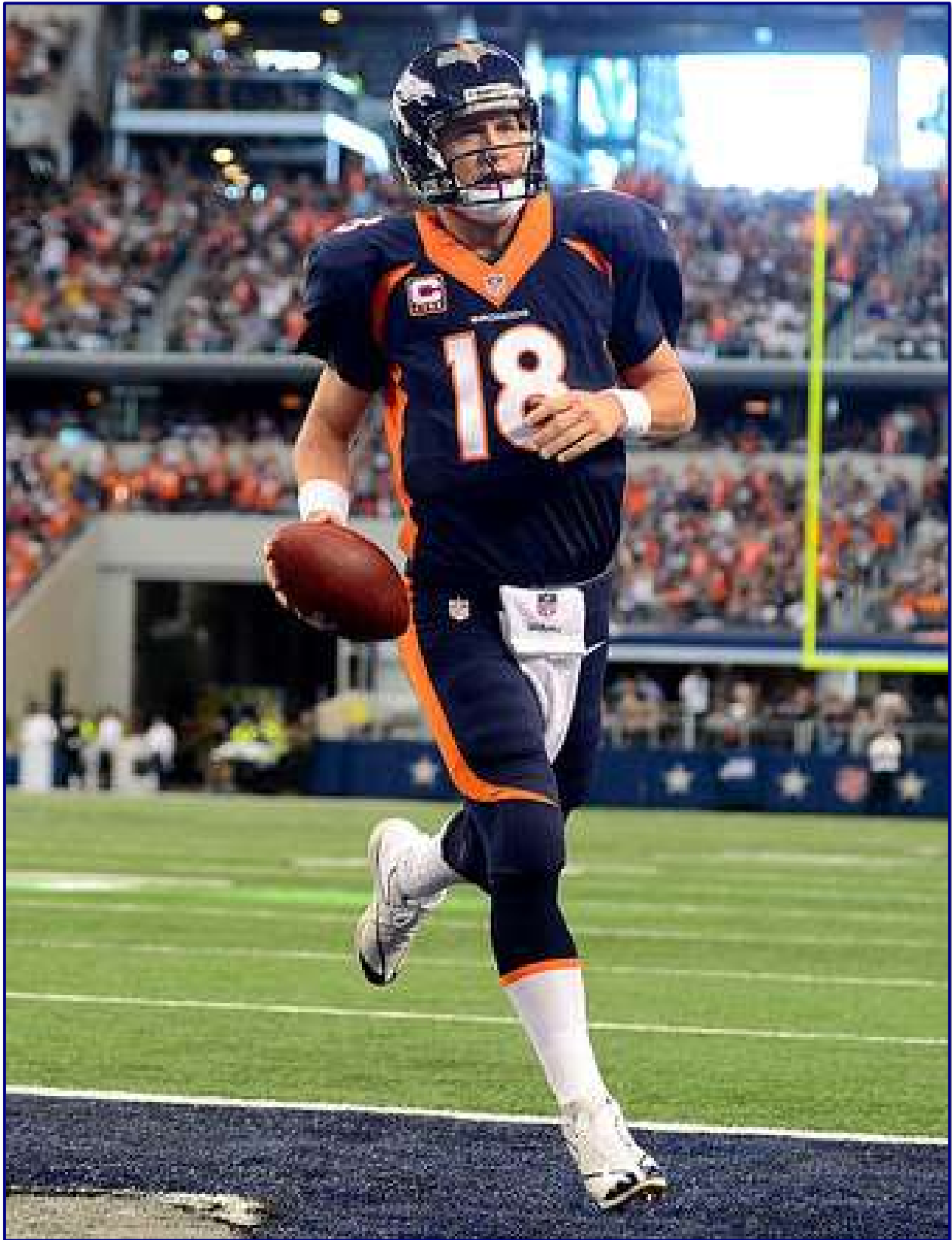
**Misc. & Notes:** "Alternate" blue jersey and pants worn for road game vs. the Dallas Cowboys on October 6<sup>th</sup>

#### Sources:

Specifications and details provided are based upon information available to us as of the date noted, through our own research as well as from what we believe are reliable sources. It is possible, however, that new information may become available that would cause us to revise this in the future.

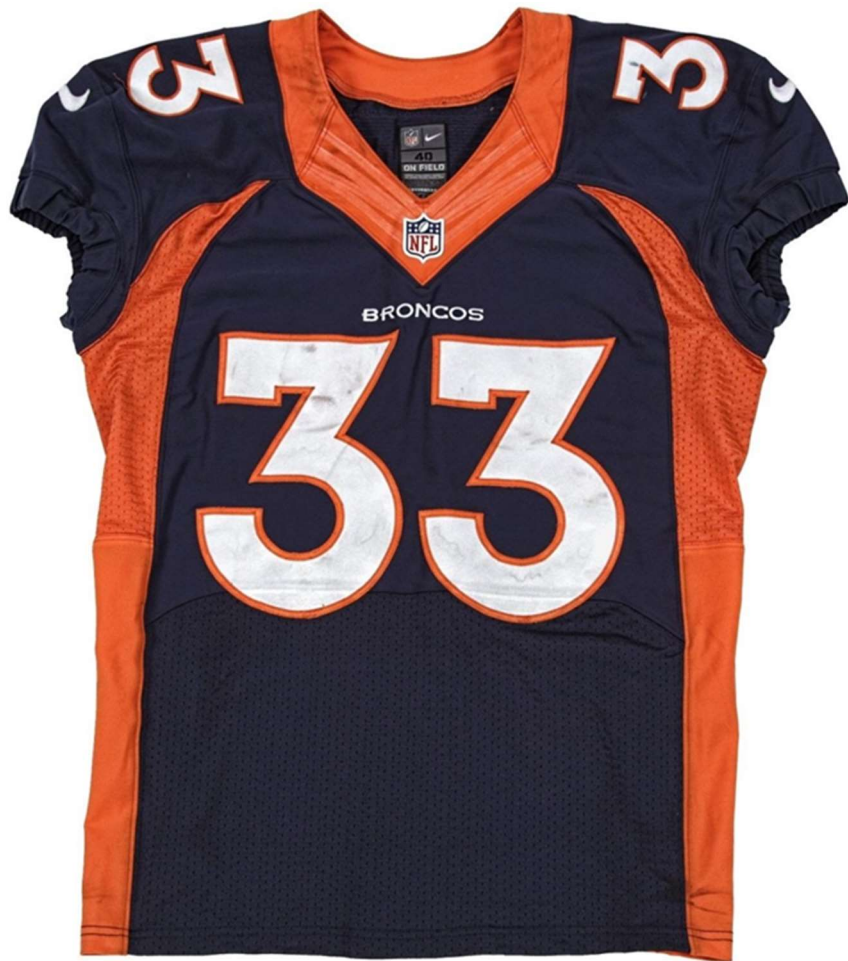


## 2013 Home Alternate (Cont'd)



*Fig. 13-10. 2013 home alternate uniform (Oct 6).  
Note Captain's patch with pink background worn in observance of Breast Cancer Awareness*

2013 Home Alternate (Cont'd)



*Figs. 13-11 & 13-12. Front and rear views of 2013 Duke Ihenacho alternate home jersey, worn Oct 6th*

## 2013 Home Alternate (Cont'd)



*Fig 13-13. 2013 alternate home pants worn (Oct 6) by Mike Adams*