

2005



Jersey

- Manufacturer:** Reebok (by Ripon Athletic)
- Unique Features:** Year tag in collar
- Design/Style Notes:** 100% Pro-Brite nylon mesh fabric body with polyester “luster” sleeves and doubled shoulder yoke; contrasting-color V-neck rib-knit collar tapers to a point at front over body-colored triangular insert, apex of collar extends into mesh body; Spandex side panel inserts in contrasting color arch up and to a point forming a stripe along each side of the jersey; ¼-length sleeves with hemmed cuff; five distinct cuts available as designed for defensive linemen, linebackers, offensive linemen, quarterbacks and skill position players.
- Tagging:**
- **Manufacturer’s:** 2 x 4” blue field with red, white, blue & silver NFL Equipment shield at upper left corner and red Reebok logo/name at lower right corner; silver field for “NAME #” (in blue font) and silver font text at upper right corner reading, “Engineered by Reebok to the exact specifications of the National Football League”; 3/8” x 5/8” white “flag” tags at right denoting body length customization (when applicable) and size; sewn into left tail (See Figs. 05-5 & 05-10)
 - **Year/Size:** 1 ¼ x 2” white tag sewn inside rear of jersey below collar (opposite of nameplate); year-size in 7/16” black font (i.e. “05-44” represents 2005 year, size 44) (See Figs. 05-6 & 05-09).
 - **Other:**
 1. 7/8 x 2 3/4” Reebok logo patch on sleeves below numbers (white logo on blue field on home jersey; blue logo on white field on road jersey)
 2. 1 3/4 x 1 5/8” NFL Equipment patch sewn onto triangular spandex insert behind the neckband and above the collar's apex
 3. “BRNCOS” 7/16” embroidered stitch below apex of collar (white on home jersey; blue on road)
 4. Jersey’s cut designated by single black ½” letter on 1 3/8 x 1 1/16” white tag sewn adjacent to year/size tag representing defensive linemen (D), linebackers (L), offensive linemen (O), quarterbacks (Q) and skill (S) position players

Specifications:

	Home	Road
Color:	Blue with orange collar	White
Striping:	Orange Spandex side panel insert; curves up and inward, tapering to point next to the collar	Blue Spandex side panel insert with orange trim along front/inside; curves up and inward, tapering to point next to the collar
Identifiers:		
Front #:	9 1/4” - white tackle twill over 3/16 - 1/4” orange revealed edge	Blue tackle twill over orange revealed edge
Back #:	10 1/8” white tackle twill over ~ 1/4” orange revealed edge	Blue tackle twill over orange revealed edge
Sleeve #:	3 5/8” white tackle twill over 1/16 - 1/8” orange revealed edge	Blue tackle twill over orange revealed edge
Lettering:	2 7/8 - 3” white tackle twill	Blue tackle twill

Helmet

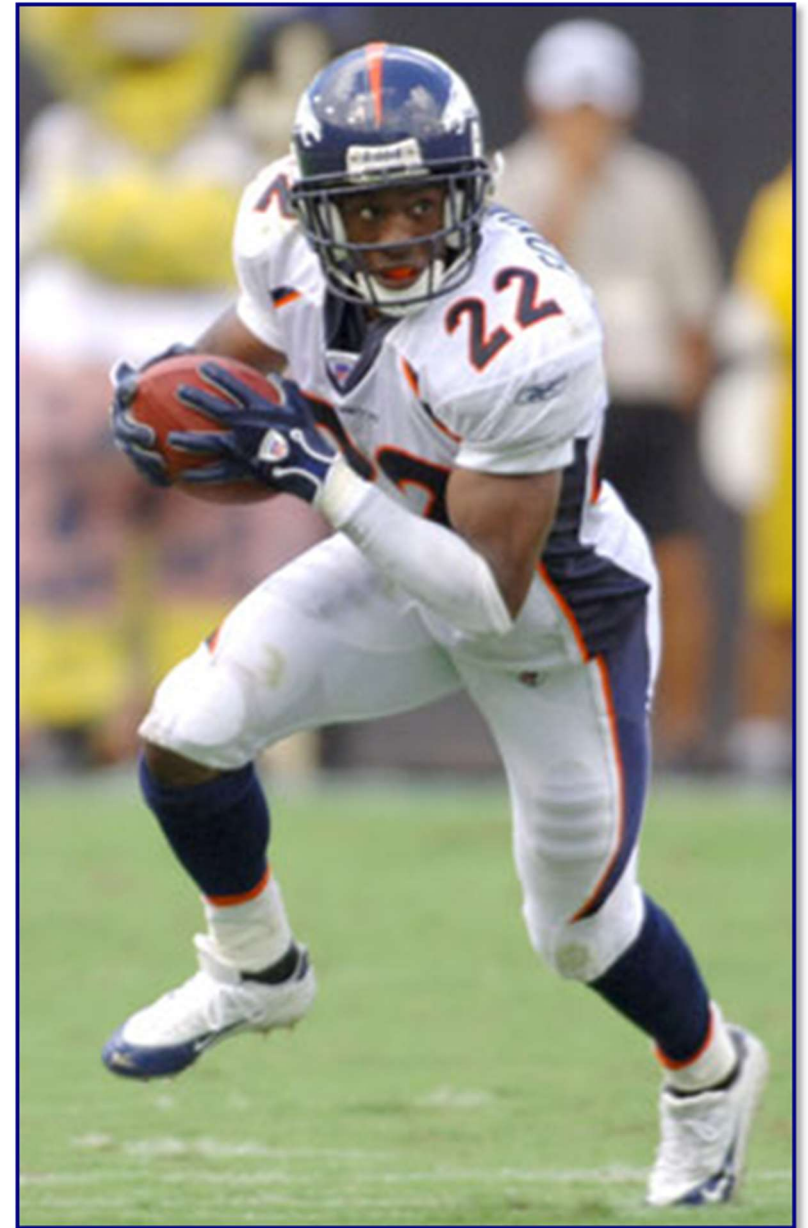
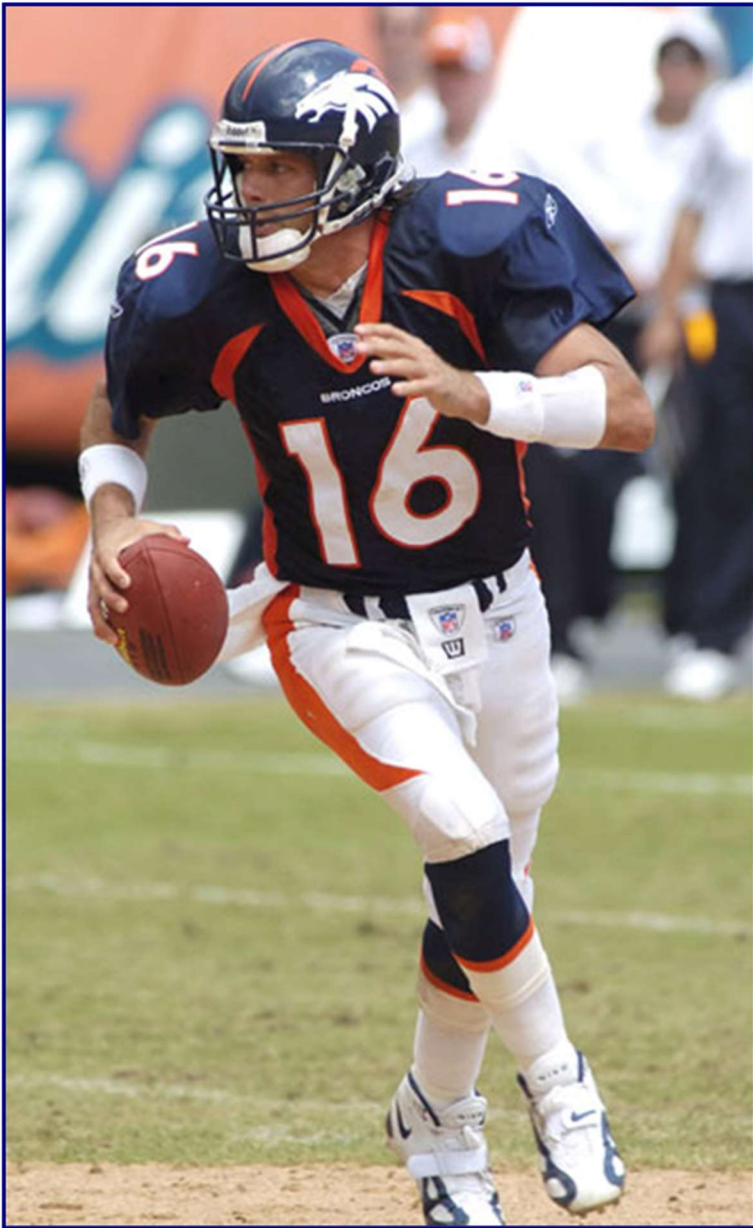


- Shell Color:** Navy Blue (impregnated)
- Logo:** White “cyber” horse head with orange eye and mane
- Striping:** Triple orange, 1” wide (at rear) X 16” long center; 5/8” w. X 11” l. outers, tapering to points at front
- Uni No:** Navy blue circular decal with white unique Broncos' fonted numbering; applied to left of striping above rear bumper
- Facemask Color:** Navy blue
- Notes:** NFL Shield decal applied to left of striping above rear bumper; "BRNCOS" decal applied to rear bumper; American flag decal applied to right side above rear bumper

2005 (Cont'd)

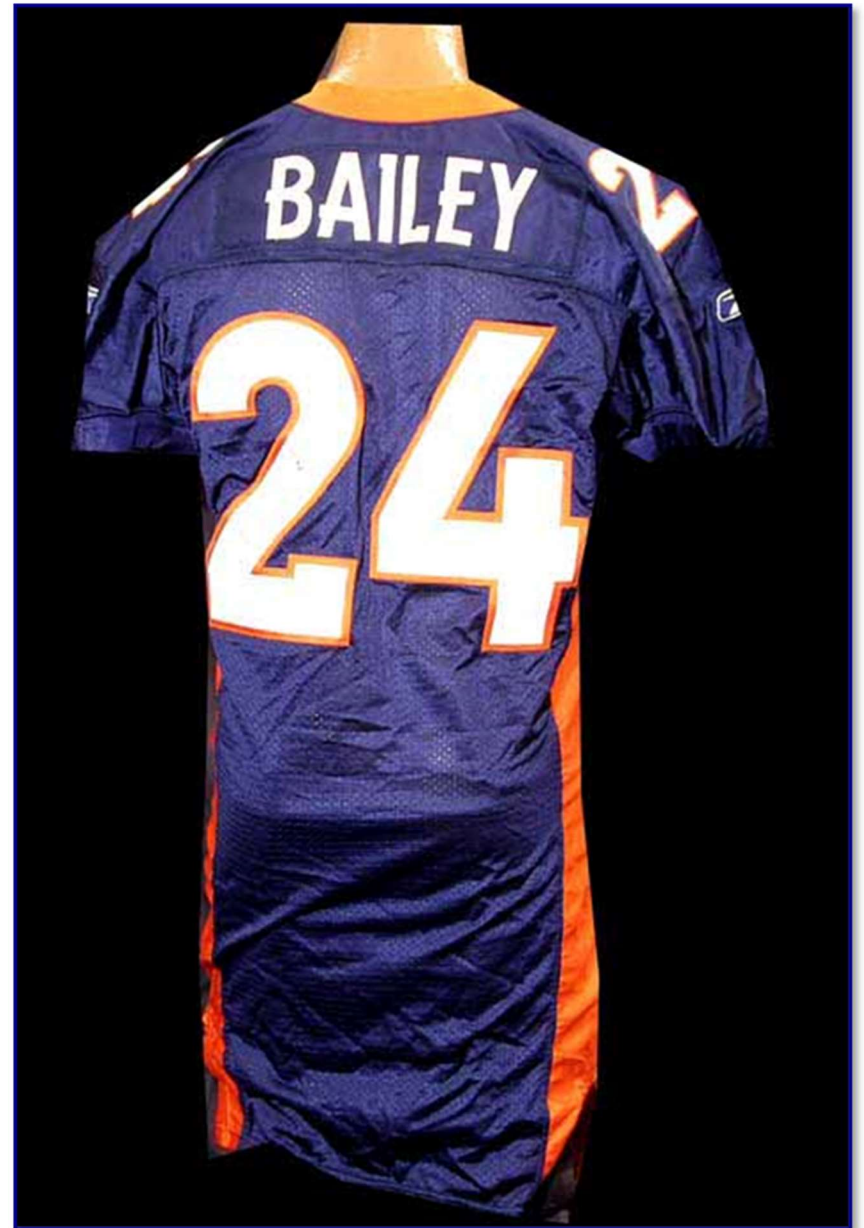
	Socks
Color: White Striping: Home: Orange Road: Blue with orange trim along front/inside Striping width matches width of jersey at the top; tapering to a point which curves inward to just above the knee Other Manufacturer: Reebok (by Ripon) NFL Shield patch sewn on to left front below belt line; Navy blue Reebok logo sewn on to right front below belt line.	Solid navy blue upper field with orange stripe separating white lower field
Misc. & Notes:	<ul style="list-style-type: none">• Team Colors: Broncos Navy Blue (Pantone© 289 C); Orange (Pantone© 1655 C) , and White¹• Specifications and details provided are as per inspection of 2005 game-used home jersey of John Lynch
Sources:	¹ 2005 Denver Broncos Media Guide, p. 2
Specifications and details provided are based upon information available to us as of the date noted, through our own research as well as from what we believe are reliable sources. It is possible, however, that new information may become available that would cause us to revise this in the future.	

2005



Figs. 05-1 & 05-2. 2005 home (J. Plummer, Sep 11) and road (D. Foxworth, Oct 2) uniforms

2005



Figs. 05-3 & 05-4. Front and rear views of 2005 home "skill" jersey (C. Bailey)

2005

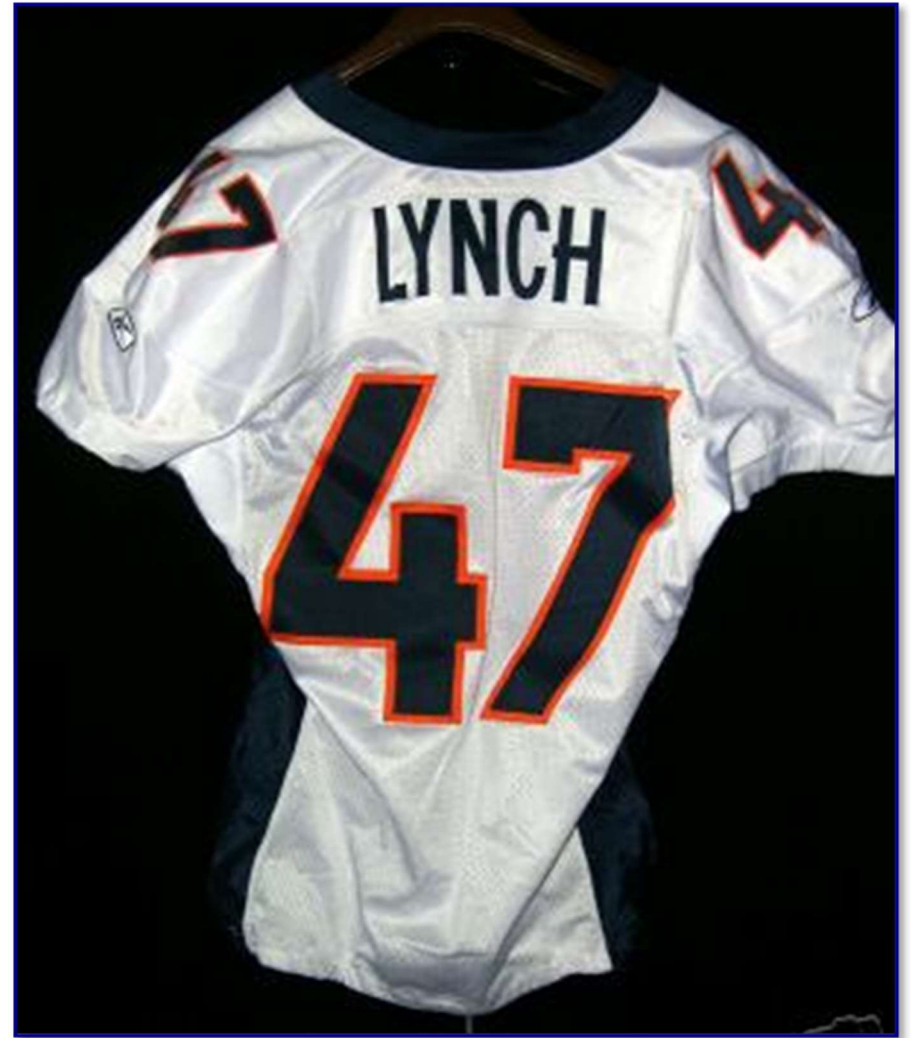


Fig. 05-5. Manufacturer's tail tagging detail from 2005 home jersey



Fig. 05-6. Collar tagging detail from 2005 home jersey

2005



Figs. 05-7. & 05-8. Front and rear views of 2005 "skill"-cut road jersey (Note tail cut above tag line)

2005



Fig. 05-9. Collar tagging detail from 2005 road jersey



Fig. 05-10. Manufacturer's tail tagging detail from 2005 road jersey