



Jersey

Manufacturer:	Russell Athletic	
Unique Features:	Nylon mesh fabric; 1" rib-knit elastic V-neck collar with apex intersecting the horizontal cowl seam and vertical collar seam (See Fig. 87-5); horizontal seam attaches body front to double shoulder cowl; diamond shaped underarm gusset; ¼ length sleeves (i.e. 11 ¼" on size 50); ½" hemmed sleeve of self material; "Lineman's" jersey with 3 ½" spandex side panel insert.	
Design/Style Notes:		
Tagging:	<ul style="list-style-type: none"> • Manufacturer: 3 ¾" x 1 7/16" includes blue/red Russell Athletic logo, "WORN BY AMERICA'S TOP TEAMS," size (7/16" font), and care instructions in blue font (see Figs. 87-3 & 87-6) • Other: Typically, ¼" x 1" content tag sewn beneath and centered below manufacturer's tag, "100% NYLON" 1/16" in black font 	
Specifications:	Home	Road
Color:	Standard athletic Burnt Orange	White
Striping:	Russcote 2-color, 5-stripe pattern. White center, blue outers, orange spacing.	Russcote 2-color, 5-stripe pattern. Orange center, blue outers, white spacing.
Identifiers:		
Front #:	9 7/8" white Russcote over 1/4-5/16" blue revealed edge (~10 ½" overall)	9 ¾" blue Russcote over 3/8" orange revealed edge (~10 ½" overall)
Back #:	11 3/4" white Russcote over 1/4-5/16" blue revealed edge (~12 1/4" overall)	11 ¼" blue Russcote over 3/8" orange revealed edge (~12" overall)
Sleeve #:	3 7/8" white Russcote over 3/16 - 1/4" blue revealed edge (~4 3/8" overall)	4" blue Russcote over 3/16 - 1/4" orange revealed edge (~4 3/8" overall)
Lettering:	White	Blue heat-set vinyl on sewn-on nameplate (~4 ½" x 16")

Helmet



Shell Color:	Royal Blue (impregnated)
Logo:	Snorting white bronco rearing from inside orange "D"
Striping:	0.75" White / 1" Orange / 0.75" White
Uni No:	1.5" white unique-serif font straddling center stripe on rear of helmet
Facemask Color:	White
Notes:	

Pants

Color:	White
Striping:	~2" orange center stripe bordered by dual ¾-1" blue stripes along outseam (dimensions estimated)

Socks

Orange field with 2-color, 5-stripe striping pattern. White center and blue above and below separated by orange spacing

Misc. & Notes:	<ul style="list-style-type: none"> • Specifications and details provided are as per inspection of circa 1987 game-used road jersey of QB John Elway; 1987 game-used road jersey of LB Dan MacDonald.
---------------------------	---

Sources:

Specifications and details provided are based upon information available to us as of the date noted, through our own research as well as from what we believe are reliable sources. It is possible, however, that new information may become available that would cause us to revise this in the future.

1987



Fig. 87-1. 1987 home uniform (Dec 6)

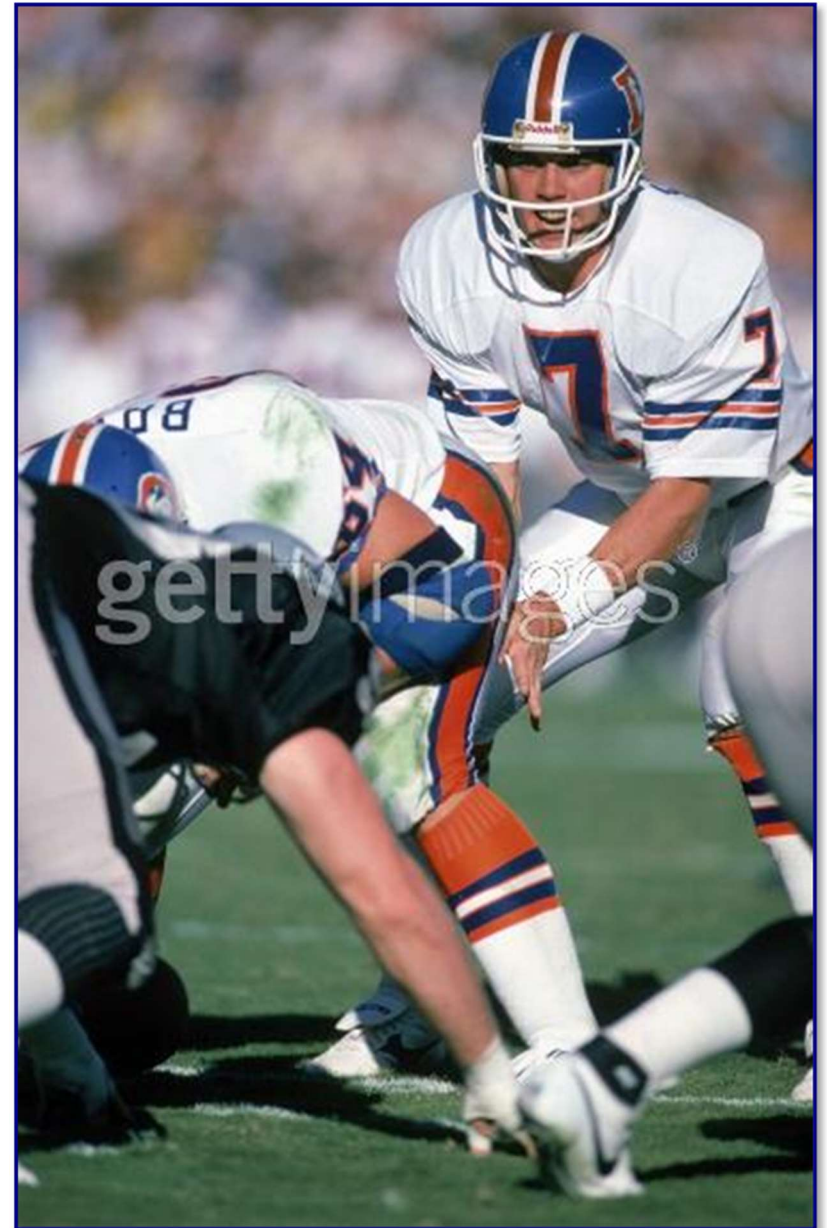


Fig. 87-2. 1987 road uniform (J. Elway, Nov 22)

1987



Figs. 87-3. Front, rear and tagging detail 1987 home jersey (J. Elway)

1987



Figs. 87-4 & 87-5. Front and rear of 1987 road jersey (D. MacDonald)



Fig. 87-6. Manufacturer's tagging from 1987 road jersey

1987



Figs. 87-7 & 87-8. Sleeve (left) and collar (right) detail from 1987 road jersey