



## Jersey

	Home	Road
<b>Manufacturer:</b>	Medalist Sand-Knit	Rawlings
<b>Unique Features:</b>	First year of 4 <sup>th</sup> -generation style uniform	
<b>Design/Style Notes:</b>	Durene fabric; 1/2-length sleeves (i.e. 12" on size 48) with 1 1/4" ribbed knit cuffs; crew-style ribbed knit collar with slightly angled yoke seam intersecting into neck; serif-style block numbering with narrow font.	Durene fabric; 1/2-length sleeves with ~1 1/2" ribbed knit cuffs; crew-style ribbed knit collar with horizontal yoke seam intersecting into neck; serif-style block numbering with narrow font.
<b>Tagging:</b>	Approx. 1 1/4" w. x 1" h. on outside of left tail (see Fig. 67-5)	2-part manufacturer's size and care instructions tagging on inside of left rear tail (see Fig. 67-8)
<b>Color:</b>	Orange	White
<b>Striping:</b>	2-color, 5-stripe pattern embedded into sleeve. 7/16" white center, 7/8" blue outers, 1/8" orange spacing	2-color, 5-stripe pattern. Orange center, blue outers, white spacing.
<b>Identifiers:</b>		
<b>Front #:</b>	7 1/2" white tackle twill with 1/8" blue embroidered edge (sewn through jersey)	Blue tackle twill with orange embroidered edge <sup>1</sup>
<b>Back #:</b>	9" white tackle twill with 1/8" blue embroidered edge (sewn through jersey)	Blue tackle twill with orange embroidered edge
<b>Sleeve #:</b>	3 1/2" white tackle twill with 1/8" blue embroidered edge (sewn through jersey)	Blue tackle twill with orange embroidered edge <sup>2</sup>
<b>Lettering:</b>	White on sewn-on nameplate (4 3/4" x 18")	Blue

## Helmet



<b>Shell Color:</b>	Blue (painted)
<b>Logo:</b>	None
<b>Striping:</b>	3/4" Orange / 1" White / 3/4" Orange
<b>Uni No:</b>	2" white "NCAA" sans-serif font straddling center stripe on rear of helmet
<b>Facemask Color:</b>	Gray
<b>Notes:</b>	One-year helmet style. Shell color changed to blue with orange/white/orange triple stripe; no logo

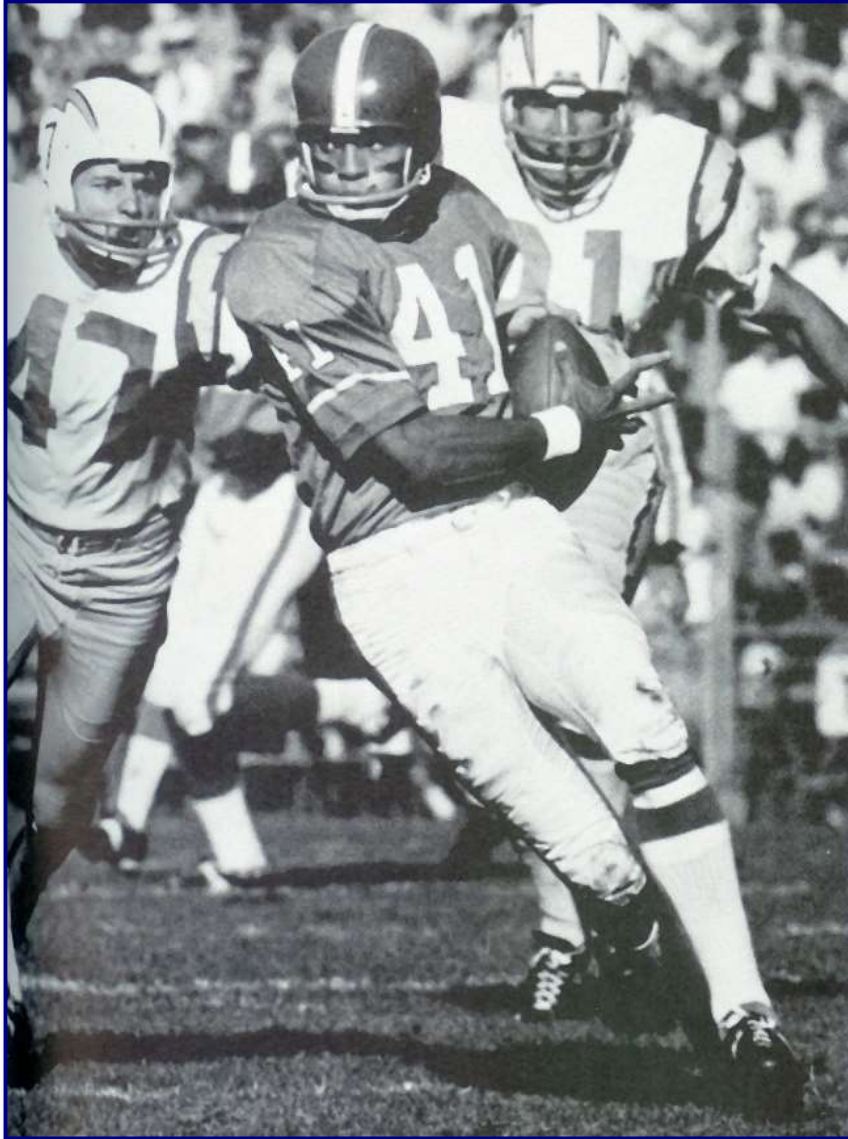
	Pants	Socks
<b>Color:</b>	White	Solid blue
<b>Striping:</b>	~1 1/4 - 1 1/2" blue center stripe bordered by dual 3/4-1" reddish-orange stripes along outseam (dimensions estimated)	

<b>Misc. &amp; Notes:</b>	<ul style="list-style-type: none"> <li>Team colors: Burnt Orange, Academy Blue and White.<sup>3</sup> Color change from Royal Blue to Academy Blue coincided with home jersey manufacturer change from Rawling to Wilson.</li> <li>Specifications and details provided are as per inspection of 1967-'68 home jersey of Rich Jackson and description of 1967-'68 road jersey of Tom Cichowski (c/o of D. Hooker)</li> </ul>
---------------------------	---

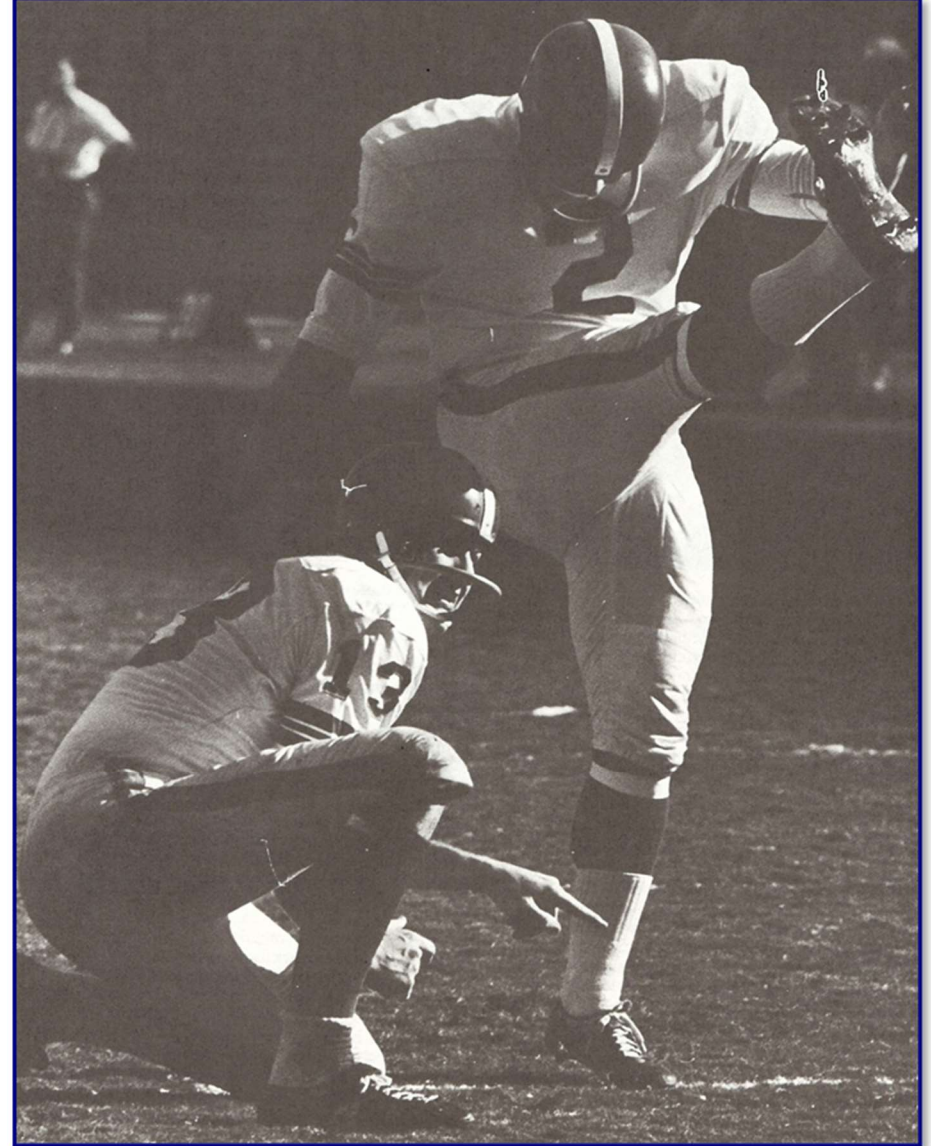
<b>Sources:</b>	<sup>1</sup> Gordon, Larry & Burnell, Dick, <i>Barely Audible: A History of the Denver Broncos</i> . Graphic Impressions: Denver, 1975. p. 204 <sup>2</sup> Gerszewski, Jamed (Ed.), <i>Denver Broncos 25</i> . Special Productions: Denver, 1985. p. 49 <sup>3</sup> 1967 Denver Broncos Press Radio Television Guide, p. 4.
-----------------	---

Specifications and details provided are based upon information available to us as of the date noted, through our own research as well as from what we believe are reliable sources. It is possible, however, that new information may become available that would cause us to revise this in the future.

1967



*Fig 67-1. Broncos' 1967 home uniform (E. Crabtree – Oct 22)*



*Fig 67-2. 1967 Broncos' road uniform (S. Tensi & B. Humphries)*

1967



*Fig. 67-3. Front of 1967-'68 home jersey (F. Little)*



*Fig. 67-4. Rear of 1967-'68 home jersey with team-restored nameplate on back*

1967



*Fig. 67-5. Circa 1967-'68 Medalist Sand-Knit manufacturing tag incorporating sizing designator and laundering instructions; with upper "exclusive" tag identifying distributor as "B&H Sport and Ski Center" of Littleton, Colorado*

1967



*Figs. 67-6 & 67-7. Front and rear views of 1967-'68 road jersey (T. Cichowski)*



*Fig. 67-8. Tagging detail of 1967-'68 road jersey*

1967



*Figs. 67-9 & 67-10. Nameplate/rear number (left) and sleeve detail of 1967-'68 road jersey*