



Jersey

Manufacturer: Reebok (by Ripon Athletic)
Unique Features: Year tag in collar
Design/Style Notes: 100% Pro-Brite nylon mesh fabric body with polyester “luster” sleeves and doubled shoulder yoke; contrasting-color V-neck rib-knit collar tapers to a point at front over body-colored triangular insert, apex of collar extends into mesh body; Spandex side panel inserts in contrasting color arch up and to a point forming a stripe along each side of the jersey; ¼-length sleeves with hemmed cuff; five distinct cuts available as designed for defensive linemen, linebackers, offensive linemen, quarterbacks and skill position players.

- Tagging:**
- Manufacturer’s: See Fig. 10-7.
 - Year/Size: White tag sewn inside rear of jersey below collar (opposite of nameplate); year-size in black font (i.e. “10-46” represents 2010 year, size 46). See Fig. 10-6.
 - Other:
 1. Reebok logo patch on sleeves below numbers (white logo on blue field on home jersey; blue logo on white field on road jersey)
 2. NFL Equipment patch sewn onto triangular spandex insert behind the neckband and above the collar's apex;
 3. “BRONCOS” embroidered stitch below apex of collar (white on home jersey; blue on road)
 4. Jersey’s cut designated by single black letter on white tag sewn adjacent to year/size tag representing defensive linemen (D), linebackers (L), offensive linemen (O), quarterbacks (Q) and skill (S) position players.

Specifications:	Home	Road
Color:	Blue with orange collar	White
Striping:	Orange Spandex side panel insert; curves up and inward, tapering to point next to the collar	Blue Spandex side panel insert with orange trim along front/inside; curves up and inward, tapering to point next to the collar
Identifiers:		
Front #:	White poly-twill over orange revealed edge	Blue poly-twill over orange revealed edge
Back #:	White poly-twill over orange revealed edge	Blue poly-twill over orange revealed edge
Sleeve #:	White poly-twill over orange revealed edge	Blue poly-twill over orange revealed edge
Lettering:	White poly-twill	Blue poly-twill

Helmet

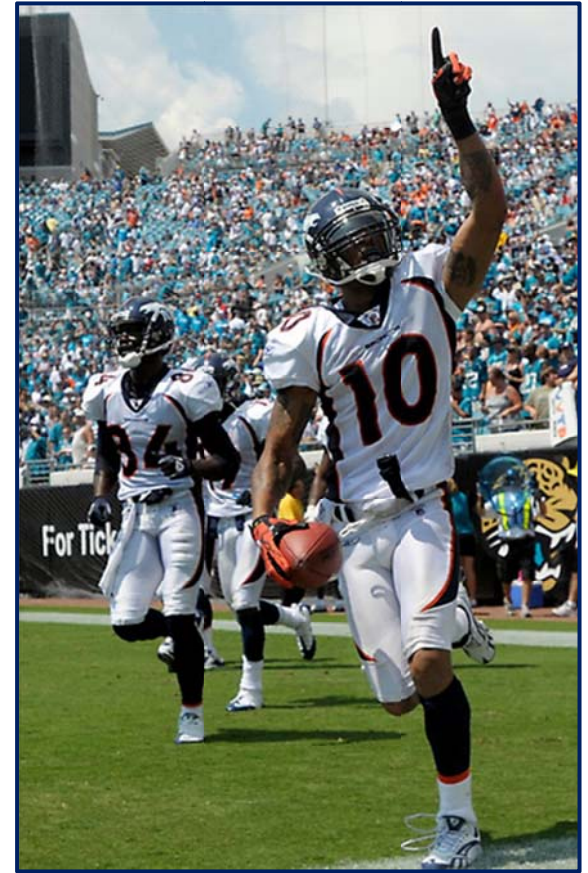


Shell Color: Navy Blue (impregnated)
Logo: White “cyber” horse head with orange eye and mane
Striping: Triple orange, 1” wide (at rear) X 16” long center; 5/8” w. X 11” l. outers, tapering to points at front
Uni No: Navy blue circular decal with white unique Broncos' fonted numbering; applied to left of striping above rear bumper
Facemask Color: Navy blue
Notes: NFL Shield decal applied to left of striping above rear bumper; "BRONCOS" decal applied to rear bumper; American flag decal applied to right side above rear bumper. White circular “11” (Navy blue) decal placed above numerical identifier in memory of Kenny McKinnley.
 Pink ribbon decal placed to the left of numerical identifier throughout the month of October in recognition of breast cancer awareness month.

2010 (Cont'd)

	Pants	Socks
Color:	Home/Road: White Alt Home: Navy blue, worn Nov 28 vs. Rams, Dec 26 vs. Texans & Jan 2 vs. Chargers (see Fig. 10-2)	Solid navy blue upper field with orange stripe separating white lower field
Striping:	Home/Alt Home: Orange Road: Blue with orange trim along front/inside Striping width matches width of jersey at the top; tapering to a point which curves inward to just above the knee	
Other	Manufacturer: Reebok (by Ripon) NFL Shield patch sewn on to left front below belt line; Navy blue Reebok logo sewn on to right front below belt line.	
Misc. & Notes:	<ul style="list-style-type: none"> • Team Colors: Broncos Navy (Pantone© 289C), Broncos Orange (Pantone© 1655C)¹, and White • Alternate orange home jersey with road pants worn for games vs. on New York Jets on October 17th and Kansas City Chiefs on November 14th (see “2010 Home Alternate” below) • Alternate home navy blue pants worn with navy home jerseys on Nov 28th vs. Rams, Dec 26th vs. Texans and Jan 2nd vs. Chargers (see Fig. 10-02). 	
Sources:	¹ 2010 Denver Broncos Media Guide, p. 4	
<p>Specifications and details provided are based upon information available to us as of the date noted, through our own research as well as from what we believe are reliable sources. It is possible, however, that new information may become available that would cause us to revise this in the future.</p>		

2010



Figs. 10-1, 10-2 & 10-3. 2010 home (Sep 19 & Nov 18) and road (Sep 12) uniforms

2010



Figs. 10-4 & 10-5. Front and rear view of 2010 home "A"-cut jersey, worn Sep 26th

2010



Fig. 10-6. Collar tagging detail from 2010 home jersey.



Fig. 10-7. Tail tagging detail from 2010 road jersey.

2010



Figs. 10-8 & 10-9. Front and rear view of 2009 home "A"-cut jersey, worn Oct 3rd

2010 Home Alternate

Jersey

Manufacturer:	Reebok (by Ripon Athletic)	
Unique Features:	Year tag in collar.	
Design/Style Notes:	100% Pro-Brite nylon mesh fabric body with polyester “luster” sleeves and doubled shoulder yoke; contrasting-color V-neck rib-knit collar tapers to a point at front over body-colored triangular insert, apex of collar extends into mesh body; Spandex side panel inserts in contrasting color arch up and to a point forming a stripe along each side of the jersey; 2-piece Spandex underarm gusset; ¼-length sleeves with hemmed cuff; five distinct cuts available as designed for defensive linemen, linebackers, offensive linemen, quarterbacks and skill position players.	
Tagging:	<ul style="list-style-type: none"> • Manufacturer’s: Blue field with red, white, blue & silver NFL Equipment shield at upper left corner and red Reebok logo/name at lower right corner; silver field for “NAME #” (in blue font) and silver font text at upper right corner reading, “Engineered by Reebok to the exact specifications of the National Football League”; white “flag” tags at right denoting body length customization (when applicable) and size; sewn into left tail • Year/Size: White tag sewn inside rear of jersey below collar (opposite of nameplate); year-size in sans serif black font (i.e. “04-44” represents 2004 year, size 44). See Fig. 08-9 • Other: <ol style="list-style-type: none"> 1. 7/8” x 2 5/8” Reebok logo patch on sleeves below numbers, blue logo & border on orange field 2. 1 ¾ x 1 5/8” updated NFL Equipment patch sewn onto triangular spandex insert behind the neckband and above the collar's apex (see Fig. 08-9) 3. 7/16” “BRONCOS” white embroidered stitching below apex of collar (reinforced backing) 4. Jersey’s cut designated by ½” single black letter on 1 3/8 x 1” white tag sewn adjacent to year/size tag representing defensive linemen (D), linebackers (L), offensive linemen (O), quarterbacks (Q) and skill (S) position players 	
Specifications:	Home	Road
Color:	Orange with blue collar	N/A
Striping:	Orange Spandex side panel insert; curves up and inward, tapering to point next to the collar	
Identifiers:		
Front #:	9 ¼” white poly-twill over ¼” blue revealed edge	
Back #:	10 ¼” white poly-twill over 1/4 – 5/16” blue revealed edge	
Sleeve #:	3 5/8” white poly-twill over 1/8” blue revealed edge	
Lettering:	2 7/8” white poly-twill	

Pants

Color:	White
Striping:	Blue with orange trim along front/inside; Striping width matches width of jersey at the top; tapering to a point which curves inward to just above the knee
Other	Manufacturer: Reebok (by Ripon). NFL Shield patch sewn on to left front below belt line; Navy blue Reebok logo sewn on to right front below belt line.
Misc. & Notes:	<ul style="list-style-type: none"> • “Alternate” home orange jersey and standard “road” pants comprised uniform worn for home games vs. the New York Jets on October 17th and Kansas City Chiefs on November 14th

Sources:

Specifications and details provided are based upon information available to us as of the date noted, through our own research as well as from what we believe are reliable sources. It is possible, however, that new information may become available that would cause us to revise this in the future.

2010 Home Alternate



Fig. 10-10. 2010 home alternate uniform (Oct 17).