



Jersey

Manufacturer:	Nike (by Ripon Athletic)
Unique Features:	Year tag; Blue Nike “Swoosh” logo sewn on sleeves of last of the 4 th generation style—the first made by (Ripon Athletic for) Nike.
Design/Style Notes:	Nylon mesh fabric with satin-type shoulder cowl & sleeves; 3 ½” Spandex side insert/underarm gusset; 1 ¼” rib-knit v-neck neckband with vertical seam; apex of collar extends 1 ½” into mesh body; horizontal seam attaches body front to double shoulder cowl; ¼-length sleeves (i.e. 10 ¾” on size 48 with hemmed sleeves); Sleeve striping (1/2” blue/1” white/1/2” blue) of both vinyl application and 2” rib-knit elastic cuffing utilized.
Tagging:	<ul style="list-style-type: none"> • Manufacturer: 4 x 1 ¾” sewn on left front tail; red, blue & grey on white. Includes Nike Team Sports logo, NFL ProLine Authentic logo and "ENGINEERED TO THE EXACT SPECIFICATION OF CHAMPIONSHIP TEAMS (black 3/16” font). See Figs. 96-7 & 96-13 • Size: (1) 5/8” x 3/8” white "flag" tag folded and sewn beneath and to the right of manufacturer’s tag (3/16" black font) See Figs 96-7 & 96-13; (2) Incorporated with year tag. See Figs. 96-5 & 96-11 • Other: <ol style="list-style-type: none"> 1. Blue Nike “Swoosh” logo patch sewn on sleeves above numbers 2. NFL Shield patch sewn on to front of jersey on collar 3. 15/16” x 15/16” care “flag” tag sewn into (wearer’s) right side seam between body front and spandex side panels. Includes laundering instructions and “Made in Berlin, WI USA” annotation in black font (see Figs. 96-8 & 96-9)

Specifications:

	Home	Road
Color:	Orange	White
Striping:	2-color, 3-stripe pattern; 1” white center, ½” blue outers; located at bottom of sleeve (vinyl)	2-color, 3-stripe pattern; ¾” orange center, 7/16” blue outers; located at bottom of sleeve (knit)
Identifiers:		
Front #:	10” white tackle twill over 5/16 - 3/8” blue revealed edge	9 ¾” blue tackle twill over 5/16 - 3/8” orange revealed edge
Back #:	12” white tackle twill over 3/8” blue revealed edge	11 ¾” blue tackle twill over 3/8” orange revealed edge
Sleeve #:	4 - 4 1/8” white tackle twill over 1/8 - 3/16” blue revealed edge	3 ¾” blue tackle twill over 3/16” orange revealed edge
Lettering:	3” white tackle twill over 1/8 - 3/16” blue revealed edge on sewn on nameplate of self material	2 7/8” blue tackle twill over 1/8” orange revealed edge on nameplate of self material

Helmet



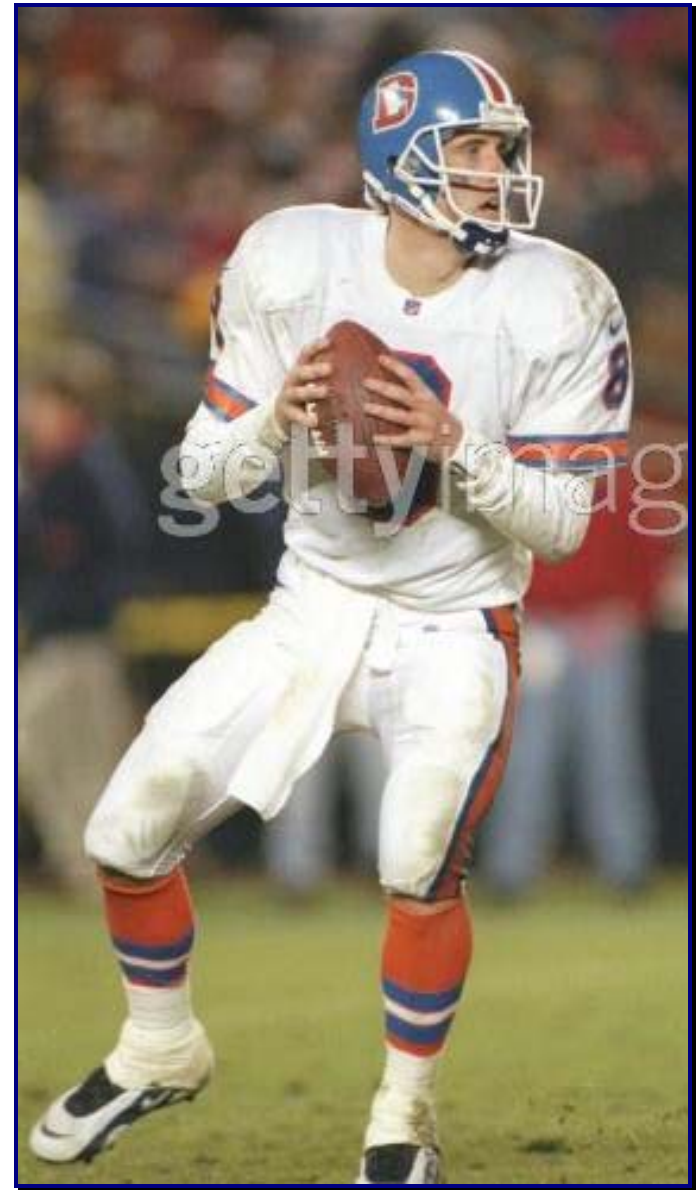
Shell Color:	Royal Blue (impregnated)
Logo:	Snorting white bronco rearing from inside orange "D"
Striping:	0.75" White / 1" Orange / 0.75" White
Uni No:	1.5" white unique-serif font straddling center stripe on rear of helmet
Facemask Color:	White
Notes:	NFL Shield decal applied to left of striping above rear bumper

(Continued next page)

1996 (Cont'd)

Color:	Pants White	Socks
Striping:	1 ¼" orange center stripe bordered by dual ½" blue stripes along outseam	Orange field with 2-color, 5-stripe striping pattern. White center and blue above and below separated by orange spacing
Other	Manufactured by Ripon for Nike; 1" x 1 ¼" NFL Shield patch sewn on to left front below belt line; 1" x 2 3/8" blue Nike "Swoosh" logo patch sewn on to right front below belt line; white belt (see Fig. 96-14)	
Misc. & Notes:	<ul style="list-style-type: none">• Team Colors: Orange, Blue and White¹• Specifications and details provided are per inspection of 1996 game-used home jersey of Steve Atwater; road jersey of Gary Zimmerman (courtesy of Tom Jacobsen)	
Sources:	¹ 1996 <i>Denver Broncos Media Guide</i> , p. 2	
Specifications and details provided are based upon information available to us as of the date noted, through our own research as well as from what we believe are reliable sources. It is possible, however, that new information may become available that would cause us to revise this in the future.		

1996

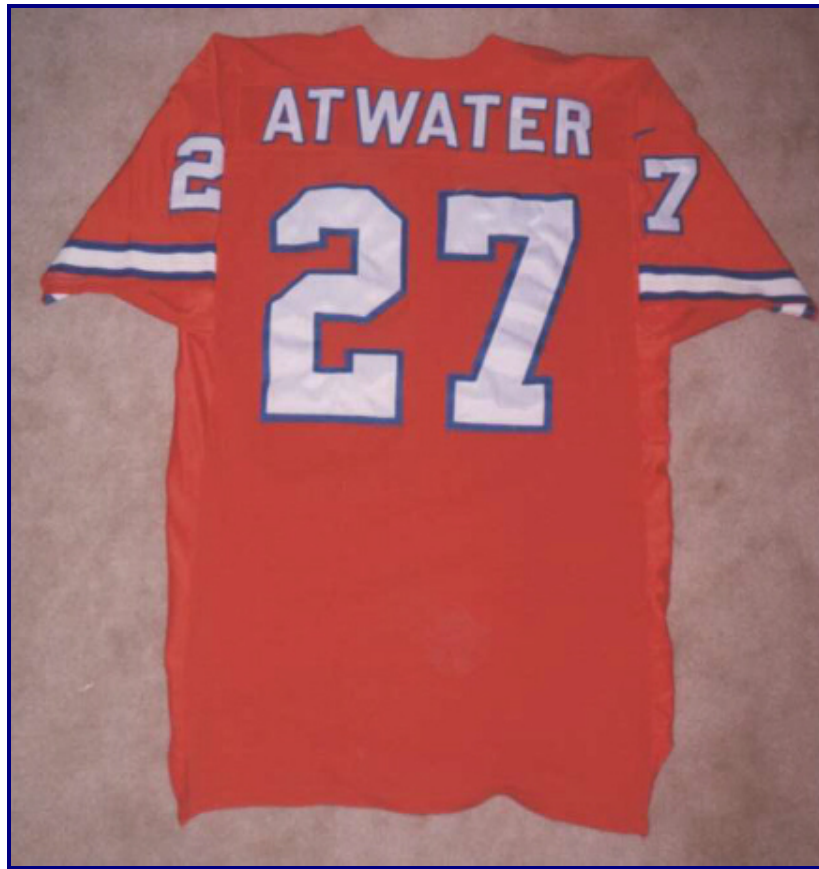


Figs. 96-1 & 96-2. 1996 Nike home (J. Elway) and road (J. Lewis) uniforms

1996



Figs. 96-3 & 96-4. Front (above) and rear (below) views of 1996 home jersey (S. Atwater)



1996

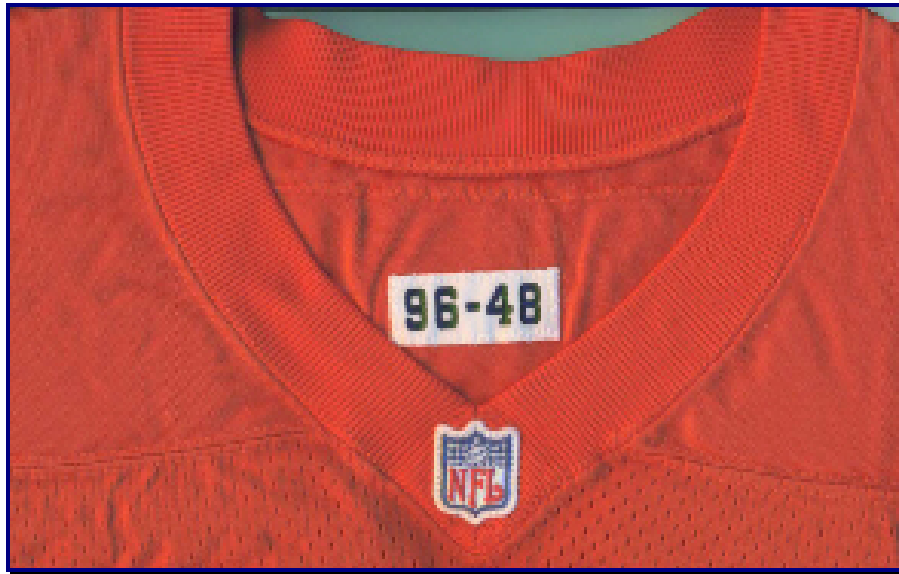


Fig. 96-5. Collar detail of 1996 home jersey with year-size tag



Fig 96-6. Nameplate detail of 1996 home jersey



Fig. 96-7. 1996 home jersey manufacturer's tagging with extra length and sizing flag tags



Figs. 96-8 & 96-9. Front & rear of manufacturer's care tag (note "Made in Berlin, WI" annotation, indicating manufactured by Ripon Athletic).

1996



Fig. 96-10. Front/rear view and collar tagging detail (inset) of 1996 road jersey

1996



Fig. 96-11. Collar detail of 1996 road jersey



Fig. 96-12. Sleeve detail of 1996 lineman's road jersey

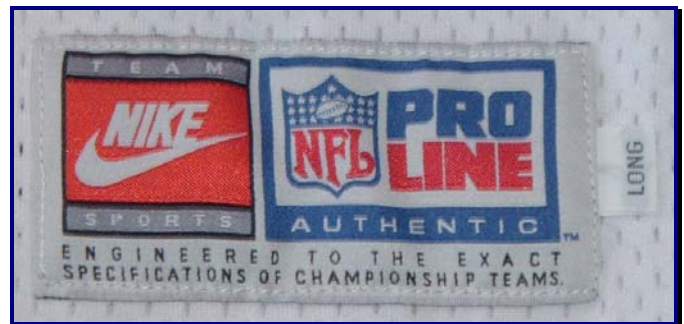


Fig. 96-13. Tail tagging detail of 1996 road jersey.

1996



Fig. 96-14. Rear/front view and tagging detail (inset) of 1996 pants