



Jersey

Manufacturer: Russell Athletic

Unique Features:

Design/Style Notes: Nylon mesh fabric; 1" rib-knit elastic V-neck collar with apex intersecting the horizontal cowl seam and vertical collar seam (See Fig. 87-5); horizontal seam attaches body front to double shoulder cowl; diamond shaped underarm gusset; ¼ length sleeves (i.e. 11 ¼" on size 50); ½" hemmed sleeve of self material; "Lineman's" jersey with 3 ½" spandex side panel insert.

- Tagging:**
- Manufacturer: 3 ¾" x 1 7/16" includes blue/red Russell Athletic logo, "WORN BY AMERICA'S TOP TEAMS," size (7/16" font), and care instructions in blue font (see Fig. 87-3)
 - Typically, ¼" x 1" content tag sewn beneath and centered below manufacturer's tag, "100% NYLON" 1/16" in black font

Specifications:

Home

Road

Color: Standard athletic Burnt Orange
Striping: Russcote 2-color, 5-stripe pattern. White center, blue outers, orange spacing.

White
 Russcote 2-color, 5-stripe pattern. Orange center, blue outers, white spacing.

Identifiers:

Front #: White Russcote over blue revealed edge

9 ¾" blue Russcote over 3/8" orange revealed edge (~10 ½" overall)

Back #: White Russcote over blue revealed edge

11 ¼" blue Russcote over 3/8" orange revealed edge (~12" overall)

Sleeve #: White Russcote over blue revealed edge

4" blue Russcote over 3/16 - 1/4" orange revealed edge (~4 3/8" overall)

Lettering: White

Blue heat-set vinyl on sewn-on nameplate (~4 ½" x 16")

Helmet



Shell Color: Royal Blue (impregnated)

Logo: Snorting white bronco rearing from inside orange "D"

Striping: 0.75" White / 1" Orange / 0.75" White

Uni No: 1.5" white unique-serif font straddling center stripe on rear of helmet

Facemask Color: White

Notes:

Pants

Color: White
Striping: ~2" orange center stripe bordered by dual ¾-1" blue stripes along outseam (dimensions estimated)

Socks

Orange field with 2-color, 5-stripe striping pattern. White center and blue above and below separated by orange spacing

Misc. & Notes:

- Specifications and details provided are as per inspection of 1987 game-used road jersey of LB Dan MacDonald

Sources:

Specifications and details provided are based upon information available to us as of the date noted, through our own research as well as from what we believe are reliable sources. It is possible, however, that new information may become available that would cause us to revise this in the future.

1987

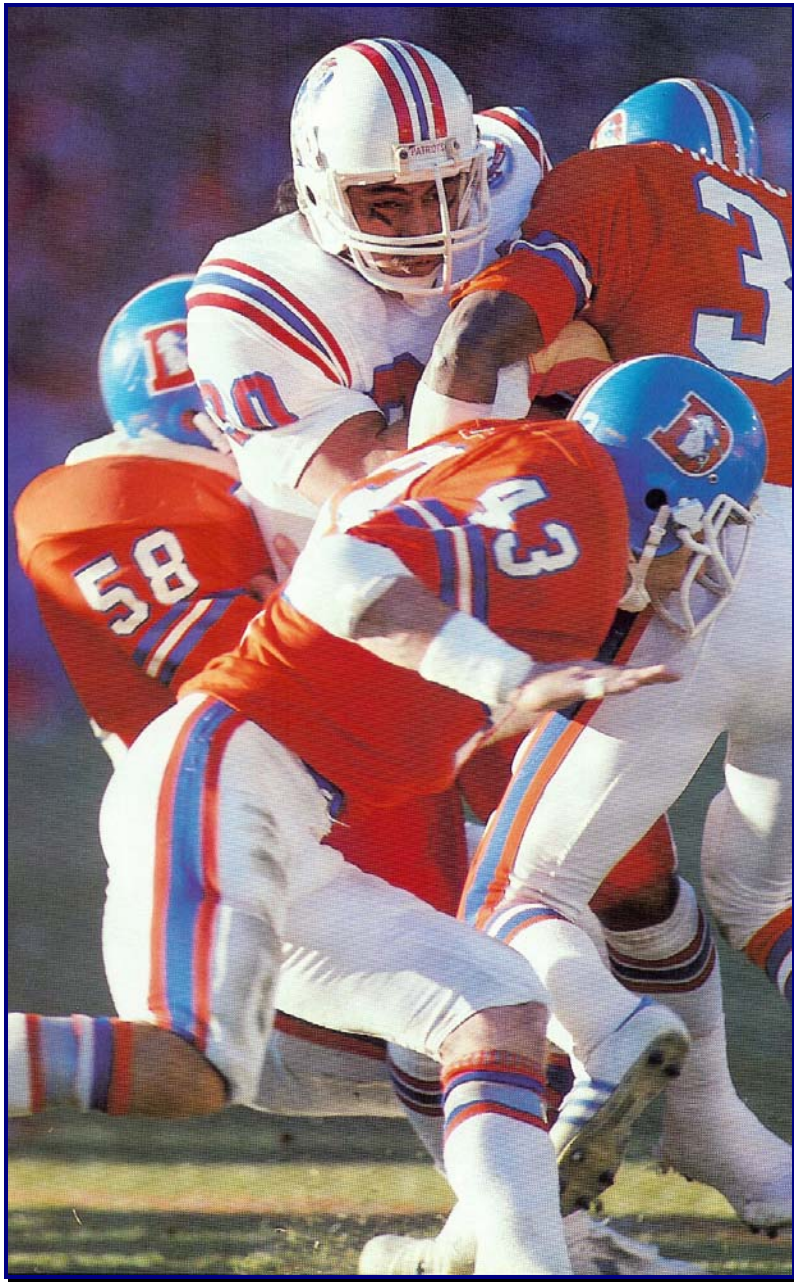


Fig. 87-1. 1987 home uniform (Dec 6, '87)



Fig. 87-2. 1987 road uniform (J. Elway, Nov 22, '87)

1987



Figs. 87-3 & 87-4. Front and rear of 1987 road jersey (D. MacDonald)

1987



Fig. 87-5. Manufacturer's tagging from 1987 road jersey



Fig. 87-6. Sleeve detail from 1987 road jersey



Fig. 87-7. Collar detail from 1987 road jersey