



Jersey

	Home	Road
Manufacturer:	Medalist Sand-Knit	Rawlings
Unique Features:	First year of 4 th -generation style uniform	
Design/Style Notes:	Durene fabric; 1/2-length sleeves (i.e. 12" on size 48) with 1 1/4" ribbed knit cuffs; crew-style ribbed knit collar with slightly angled yoke seam intersecting into neck; serif-style block numbering with narrow font.	Durene fabric; 1/2-length sleeves with ~1 1/2" ribbed knit cuffs; crew-style ribbed knit collar with horizontal yoke seam intersecting into neck; serif-style block numbering with narrow font.
Tagging:	Approx 1 1/4" w. x 1" h. on outside of left tail (see Fig. 67-5)	2-part manufacturer's size and care instructions tagging on inside of left tail (see Fig. 67-8)
Color:	Orange	White
Striping:	2-color, 5-stripe pattern embedded into sleeve. 7/16" white center, 7/8" blue outers, 1/8" orange spacing	2-color, 5-stripe pattern. Orange center, blue outers, white spacing.
Identifiers:		
Front #:	7 1/2" white tackle twill with 1/8" blue embroidered edge (sewn through jersey)	Blue tackle twill with orange embroidered edge ¹
Back #:	9" white tackle twill with 1/8" blue embroidered edge (sewn through jersey)	Blue tackle twill with orange embroidered edge
Sleeve #:	3 1/2" white tackle twill with 1/8" blue embroidered edge (sewn through jersey)	Blue tackle twill with orange embroidered edge ²
Lettering:	White on sewn-on nameplate (4 3/4" x 18")	Blue

Helmet



Shell Color:	Blue (painted)
Logo:	None
Striping:	3/4" Orange / 1" White / 3/4" Orange
Uni No:	2" white "NCAA" sans-serif font straddling center stripe on rear of helmet
Facemask Color:	Gray
Notes:	One-year helmet style. Shell color changed to blue with orange/white/orange triple stripe; no logo

	Pants	Socks
Color:	White	Solid blue
Striping:	~1 1/4 - 1 1/2" blue center stripe bordered by dual 3/4-1" reddish-orange stripes along outseam (dimensions estimated)	

Misc. & Notes:	<ul style="list-style-type: none"> Team colors: Burnt Orange, Academy Blue and White.³ Color change from Royal Blue to Academy Blue coincided with home jersey manufacturer change from Rawling to Wilson. Specifications and details provided are as per inspection of 1967-'68 home jersey of Rich Jackson and description of 1967-'68 road jersey of Tom Cichowski (courtesy of D. Hooker).
---------------------------	-----------------------------------------------------------------------------------------------------------------------------------------------------------------------------------------------------------------------------------------------------------------------------------------------------------------------------------------------------------------------------------------------------------------------------------

Sources:	¹ Gordon, Larry & Burnell, Dick, <i>Barely Audible: A History of the Denver Broncos</i> . Graphic Impressions: Denver, 1975. p. 204 ² Gerszewski, Jamed (Ed.), <i>Denver Broncos 25</i> . Special Productions: Denver, 1985. p. 49 ³ 1967 Denver Broncos Press Radio Television Guide, p. 4.
-----------------	-------------------------------------------------------------------------------------------------------------------------------------------------------------------------------------------------------------------------------------------------------------------------------------------------------------------------------------

Specifications and details provided are based upon information available to us as of the date noted, through our own research as well as from what we believe are reliable sources. It is possible, however, that new information may become available that would cause us to revise this in the future.

1967

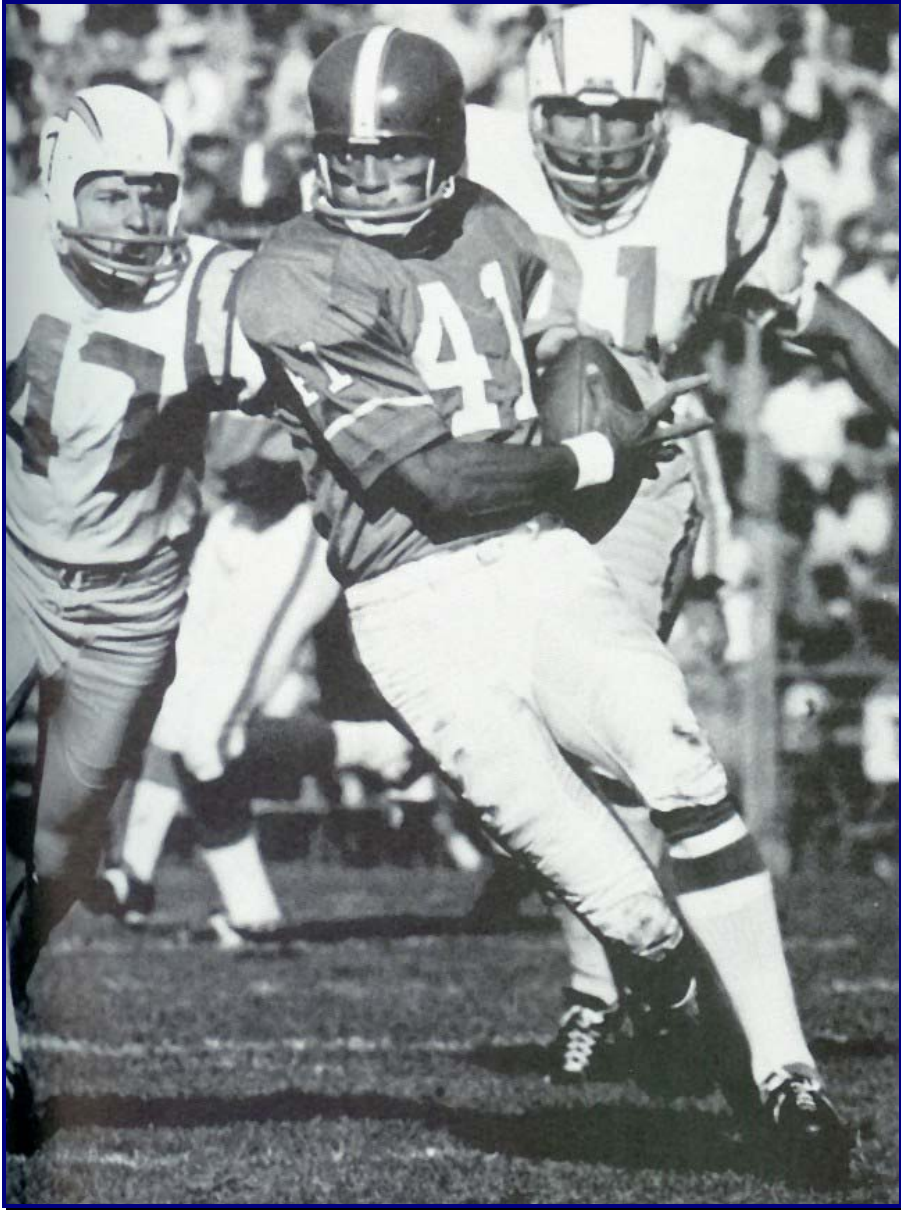


Fig 67-1. 1967 Broncos' home uniform (E. Crabtree - 10/22/67)

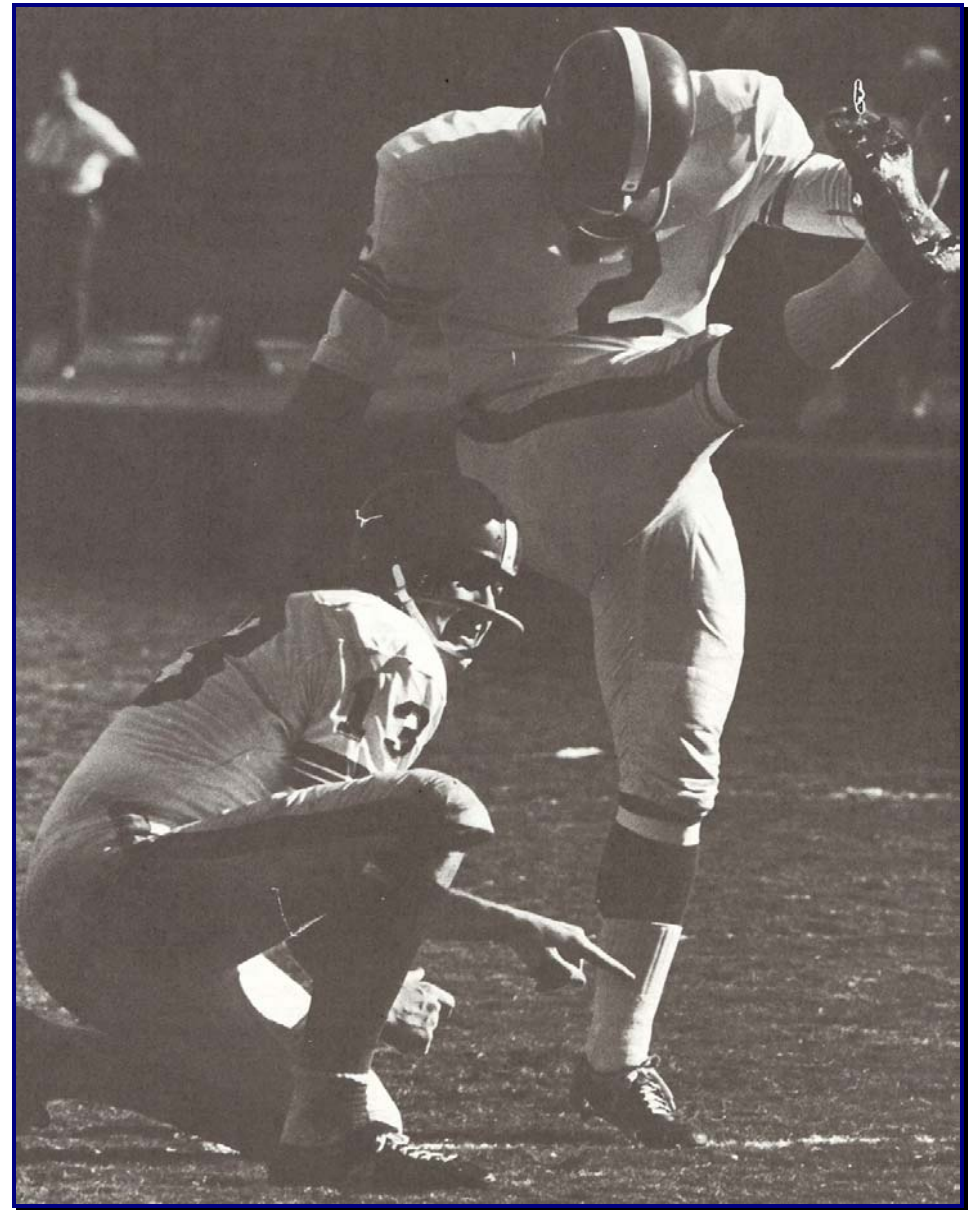


Fig 67-2. 1967 Broncos' road uniform (S. Tensi & B. Humphries)

1967



Fig. 67-3. Front of 1967-'68 home jersey (F. Little)



Fig. 67-4. Rear of 1967-'68 home jersey with team-restored nameplate on back

1967



Fig. 67-5. Circa 1967-'68 Medalist Sand-Knit manufacturing tag incorporating sizing designator and laundering instructions; with upper "exclusive" tag identifying distributor as "B&H Sport and Ski Center" of Littleton, Colorado

1967



Figs. 67-6 & 67-7. Front (top) and rear (below) of 1967-'68 road jersey (T. Cichowski)



1967



Fig. 67-8. Tagging detail of 1967-'68 road jersey



Figs. 67-9 & 67-10. Nameplate/rear number (left) and sleeve detail of 1967-'68 road jersey